

Pratapgarh Block, Pratapgarh, Rajasthan

Students Benefited 17,400

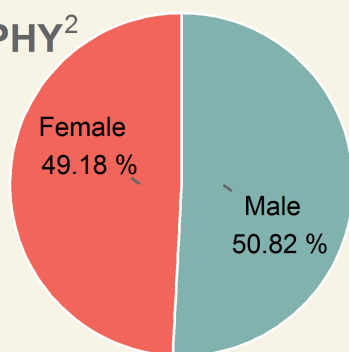
Saturation¹ 76.63%

Funded by Ministry of New and Renewable Energy
 Sir Dorabji Tata Trust
 Institutional Partner Foundation for Ecological Security
 Kits supplied by M/s. Sirius Solar Energy Systems Pvt Ltd.
 Lamps assembled at C-15, Jawhar Nagar, Pratapgarh, Rajasthan

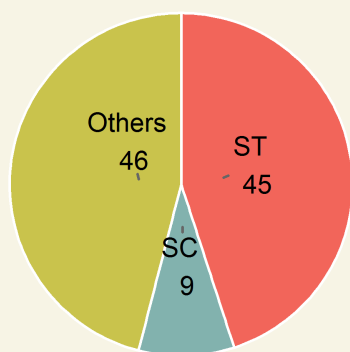


Area	Population	Rural Population	Villages	Schools
1163.89 sq.km	2,48,813	83.09%	272	451

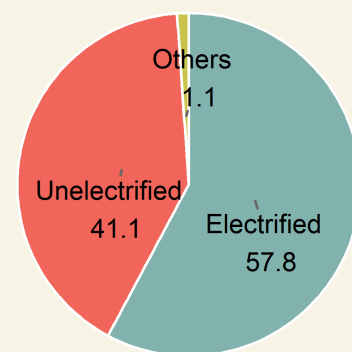
DEMOGRAPHY²



Gender

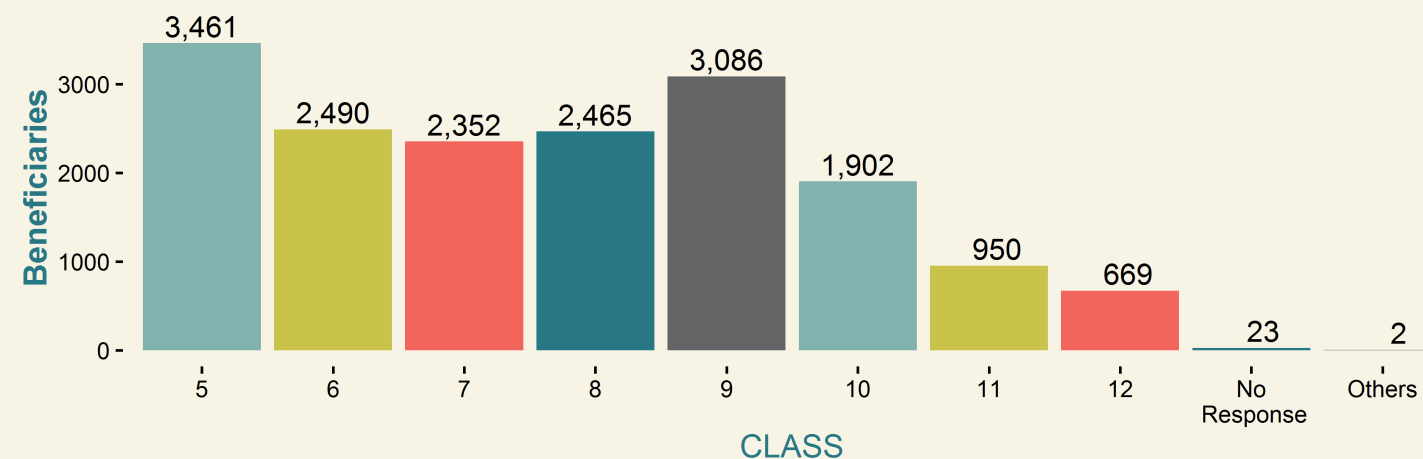
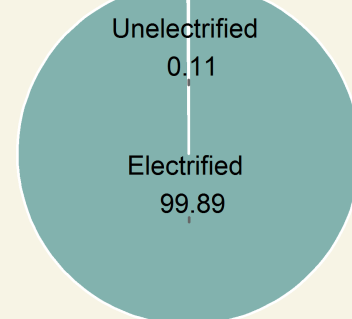
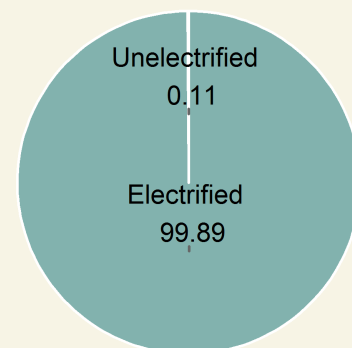
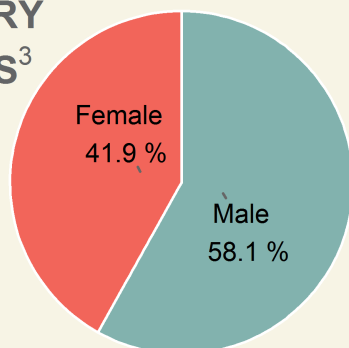


Category

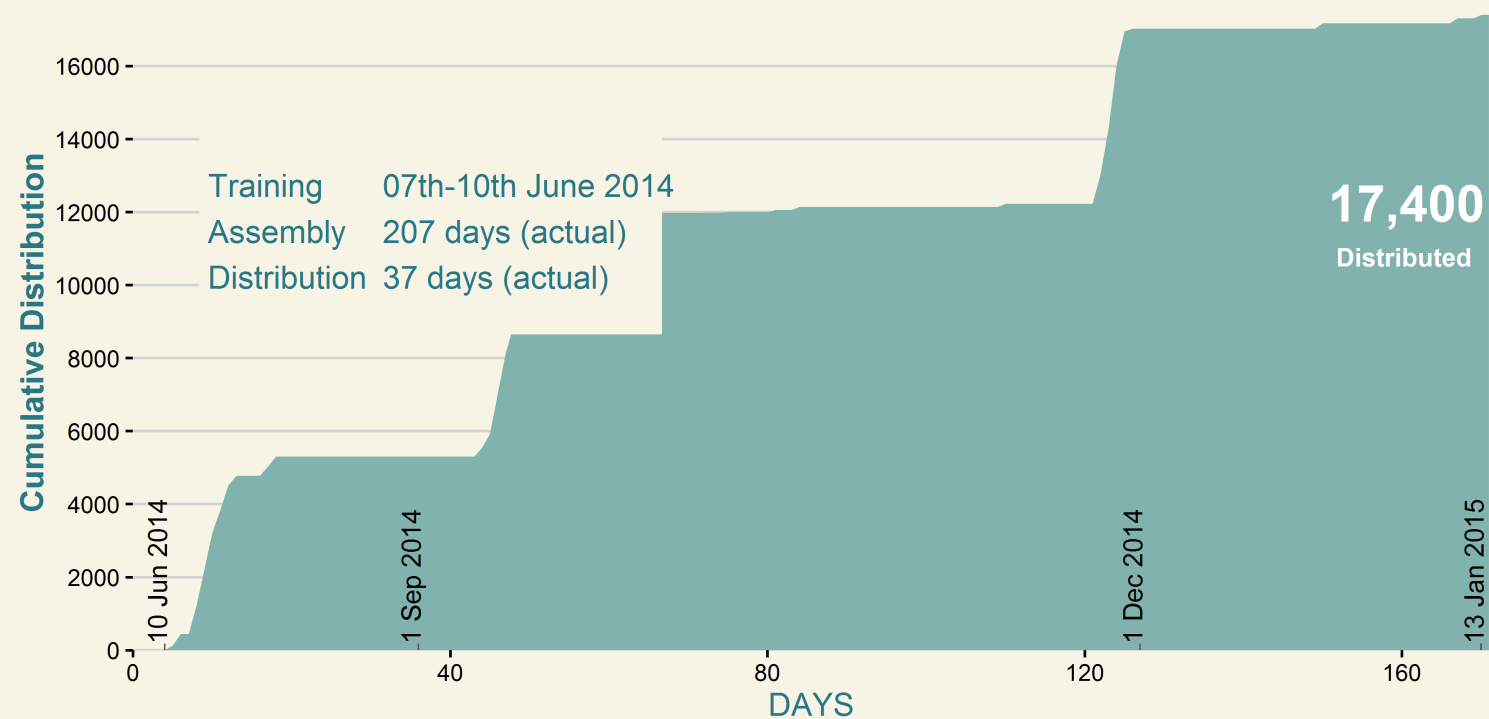


Household Electrification

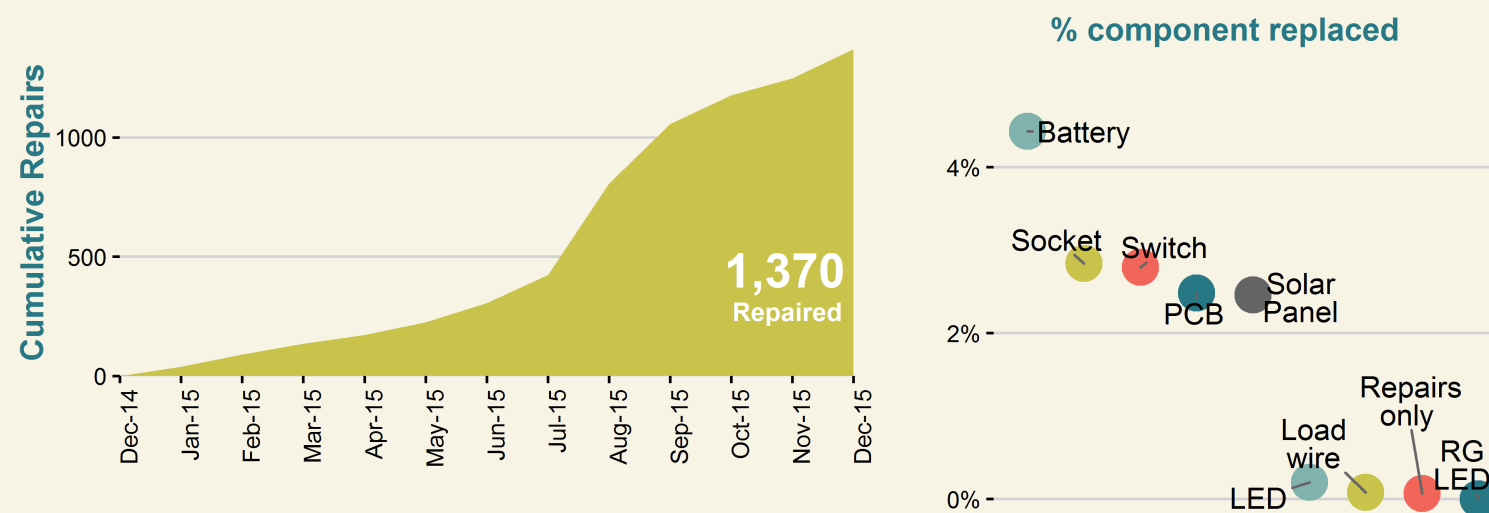
BENEFICIARY STATISTICS³



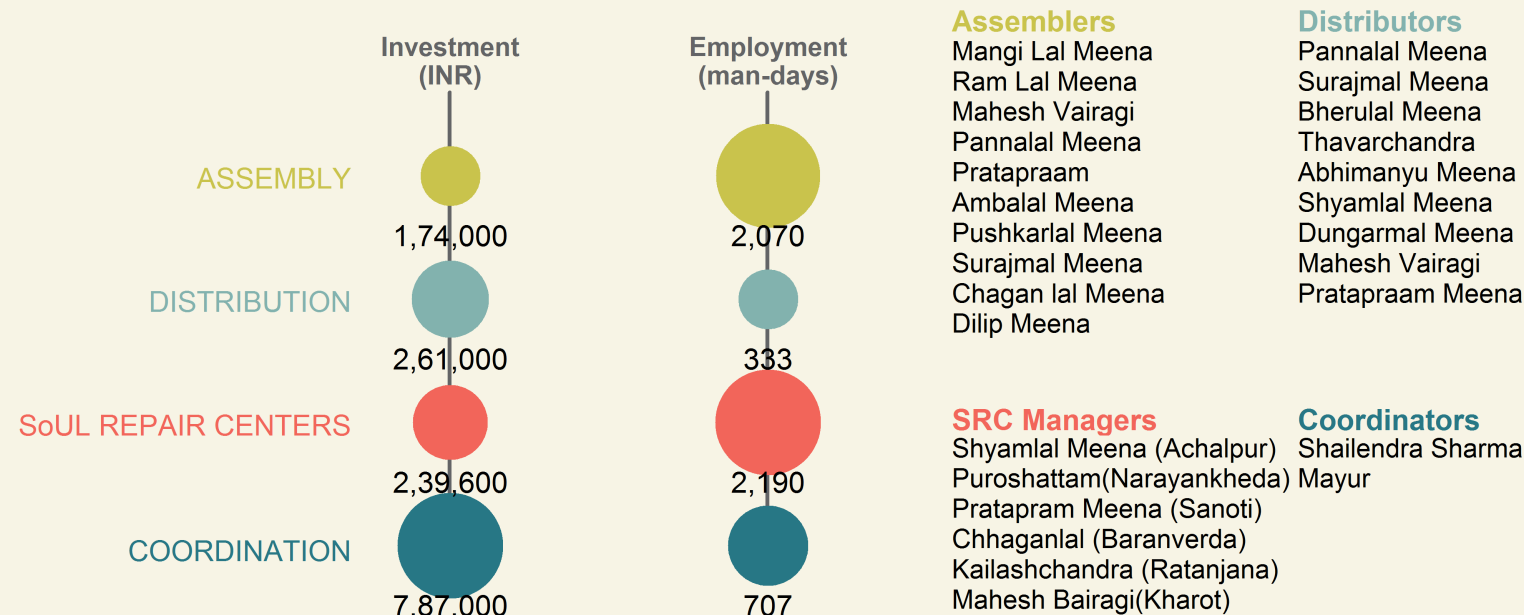
LAMP ASSEMBLY & DISTRIBUTION⁴



LAMP REPAIR & MAINTENANCE⁵



CONTRIBUTION TO LOCAL ECONOMY⁶



1. Saturation is the percentage of the block's rural school enrolment (5th-12th) benefited. (Enrolment data source: NUEPA)

2. Demography and other block details are obtained from Census of India 2011.

3. Beneficiaries details (i.e., students who purchased SoUL) were collected at the time of distribution.

4. Lamp distributed to rural students via schools at INR 120/ lamp.

5. After-sales service was provided free-of-cost through SoUL Repair Centers (SRCs) established at village clusters.

6. Actuals may vary. Coordination includes local expenses such as rent, electricity, campaigning, local logistics, supervision, etc.

