

# Mandal Block, Bhilwara, Rajasthan

**Students Benefited 20,379**

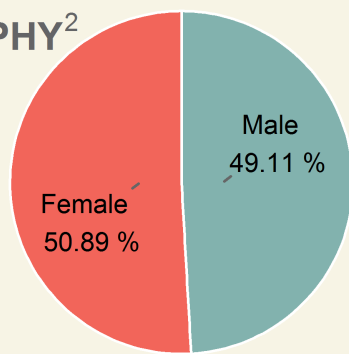
**Saturation<sup>1</sup> 77.96%**

Funded by Ministry of New and Renewable Energy  
 Sir Dorabji Tata Trust  
 Institutional Partner Foundation for Ecological Security  
 Kits supplied by M/s. Sirius Solar Energy Systems Pvt Ltd.  
 Lamps assembled at Bus Stand, Chitamba, District Bhilwara, Rajasthan

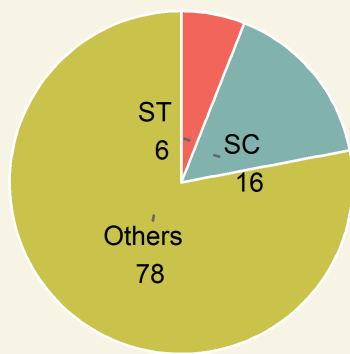


Area	Population	Rural Population	Villages	Schools
1213.57 sq.km	2,35,640	100%	210	469

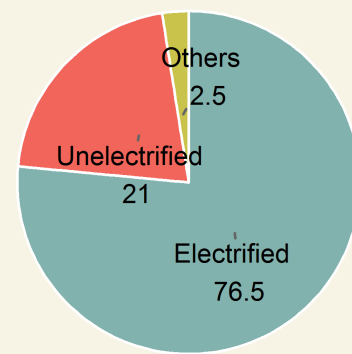
## DEMOGRAPHY<sup>2</sup>



Gender

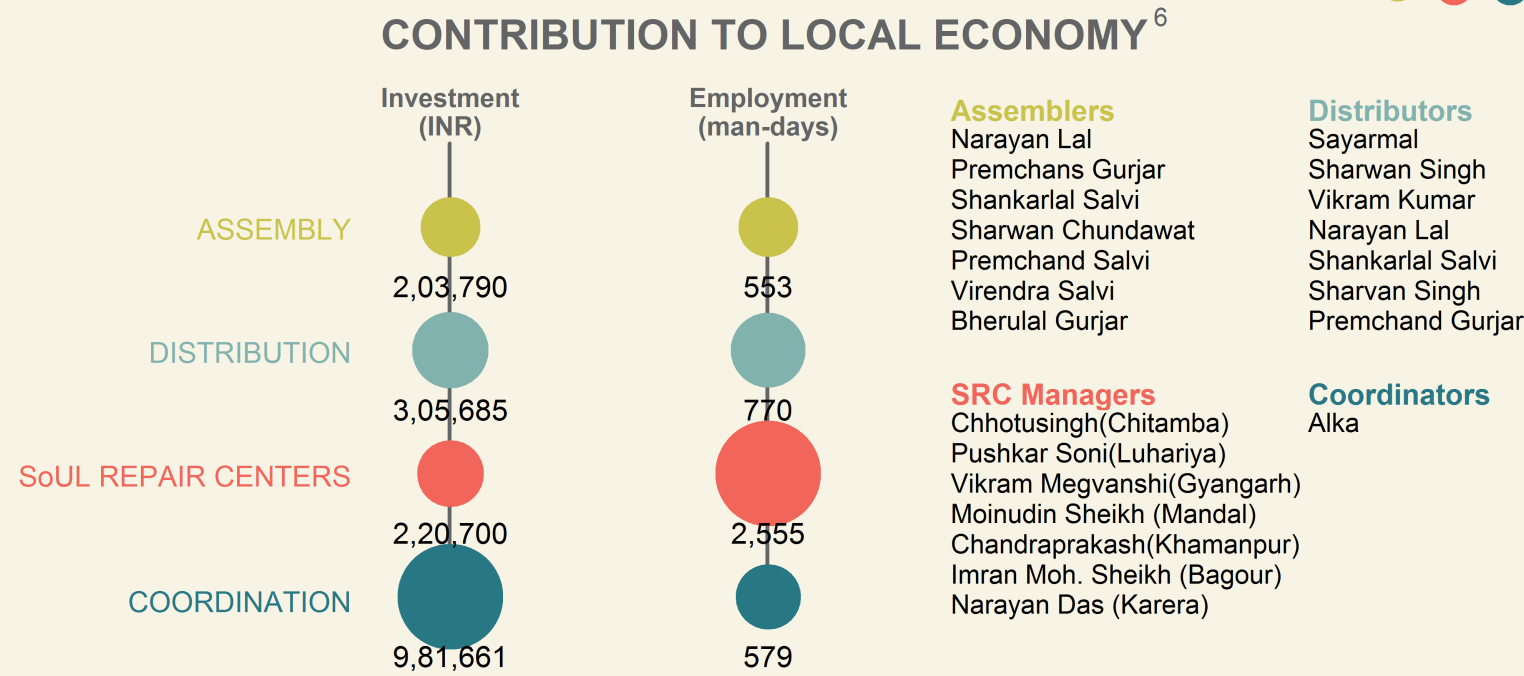
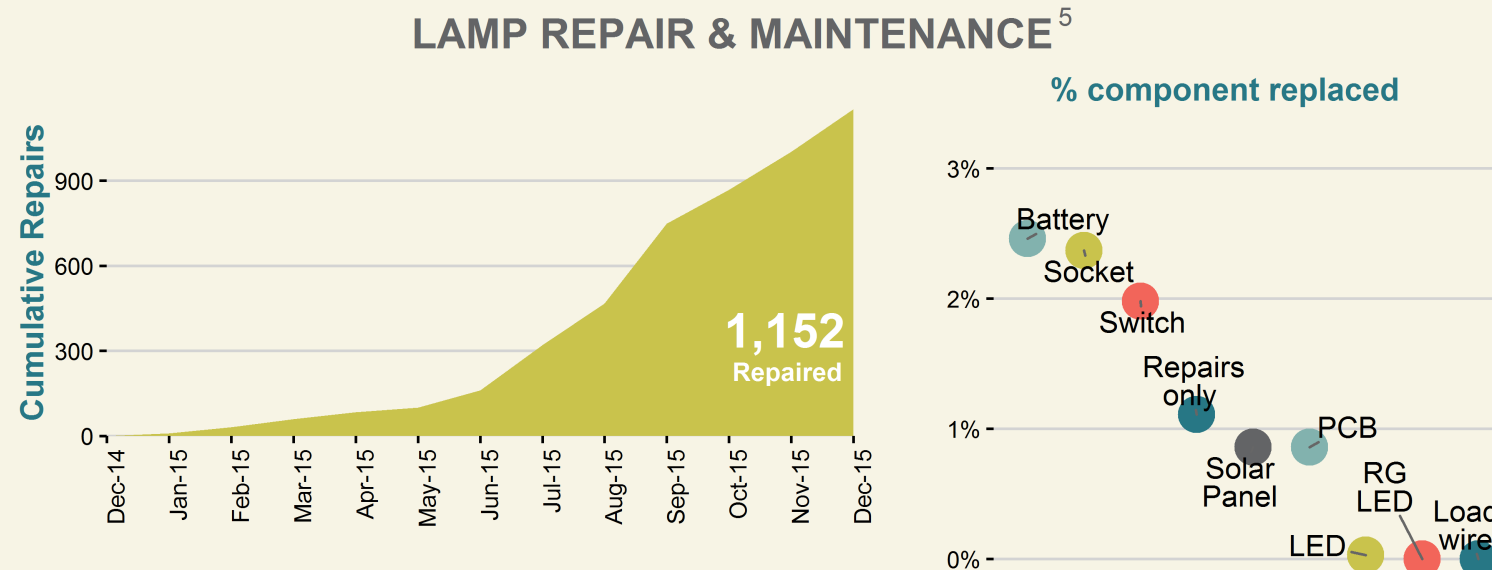
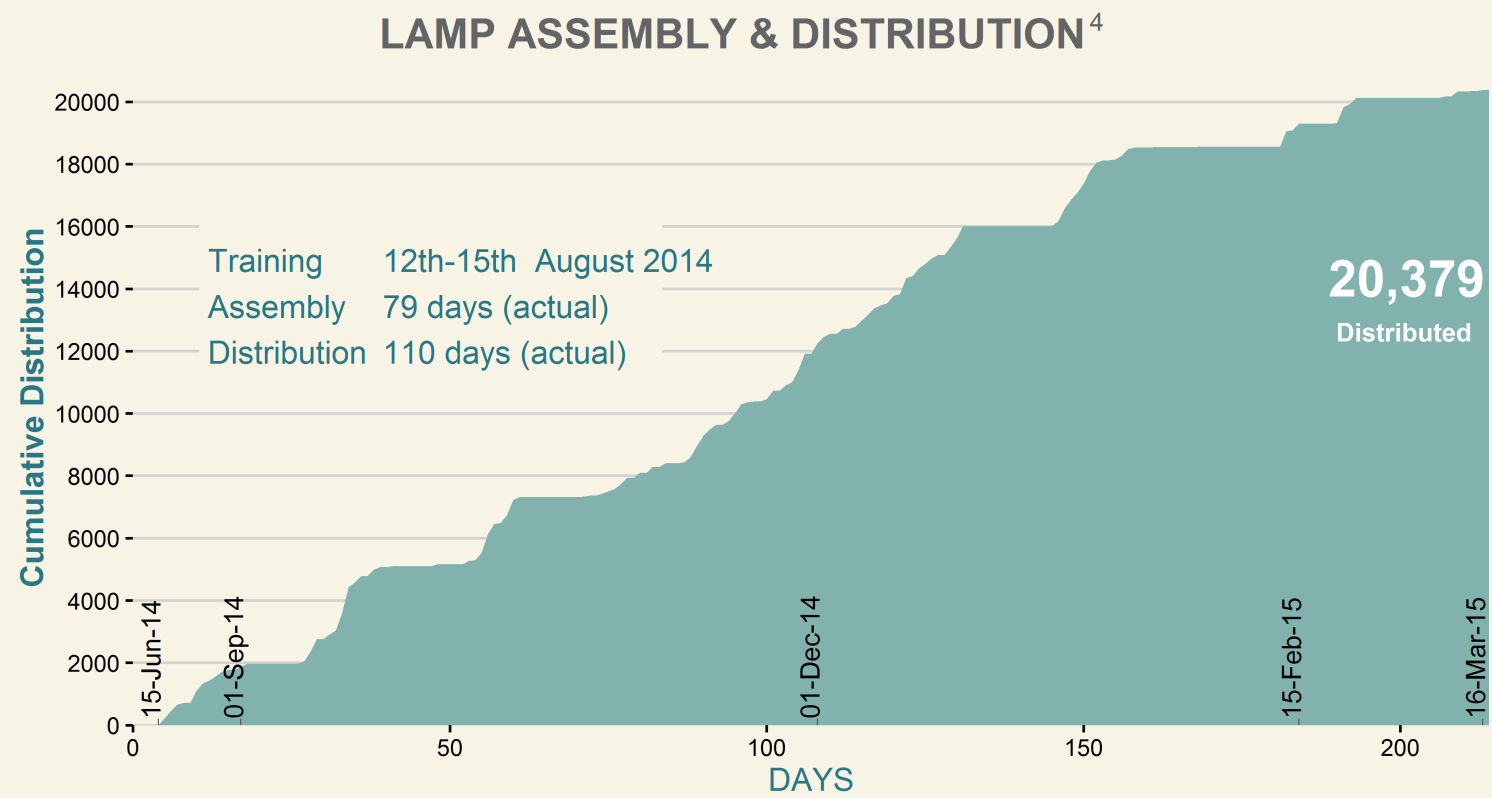
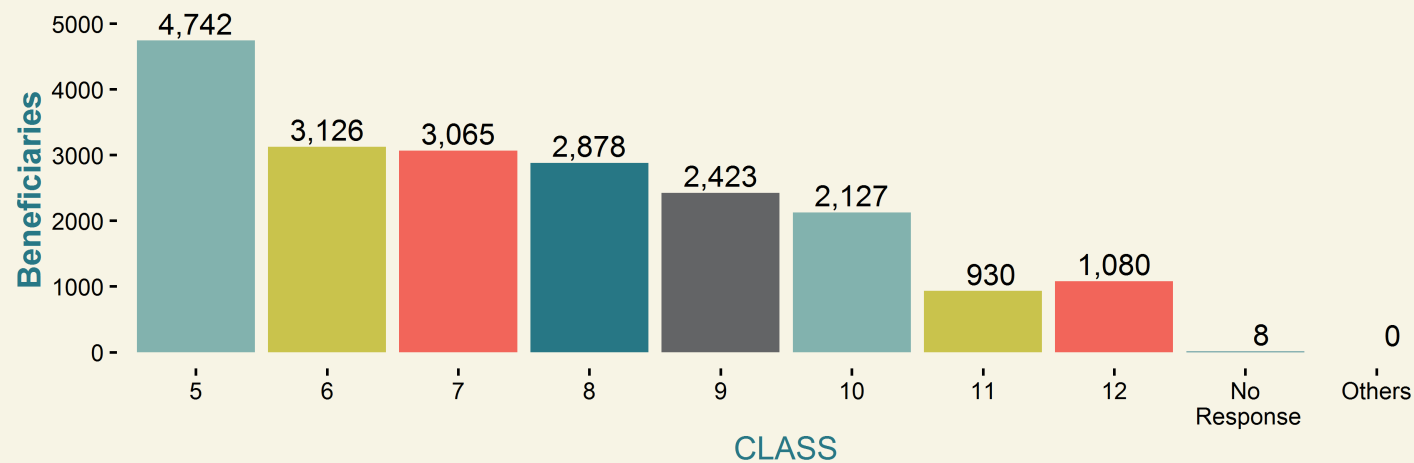
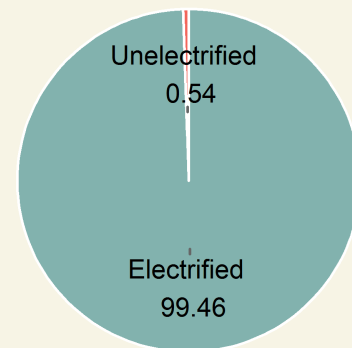
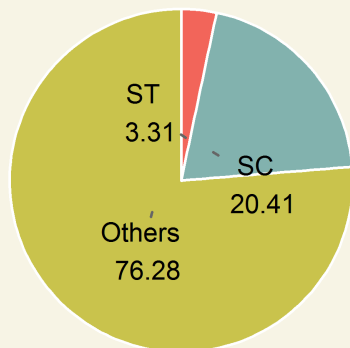
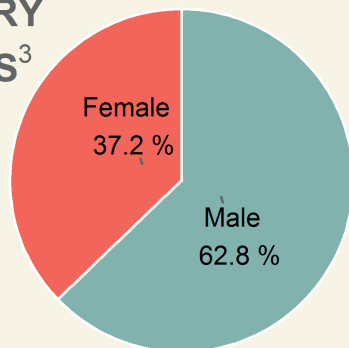


Category



Household Electrification

## BENEFICIARY STATISTICS<sup>3</sup>



1. Saturation is the percentage of the block's rural school enrolment (5th-12th) benefited. (Enrolment data source: NUEPA)

2. Demography and other block details are obtained from Census of India 2011.

3. Beneficiaries details (i.e., students who purchased SoUL) were collected at the time of distribution.

4. Lamp distributed to rural students via schools at INR 120/ lamp.

5. After-sales service was provided free-of-cost through SoUL Repair Centers (SRCs) established at village clusters.

6. Actuals may vary. Coordination includes local expenses such as rent, electricity, campaigning, local logistics, supervision, etc.

