

Jhadol Block, Udaipur, Rajasthan

Students Benefited 19,071

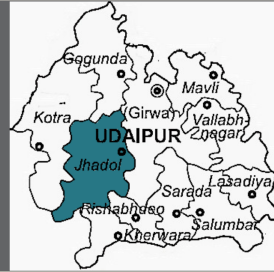
Saturation¹ 71.24%

Funded by Ministry of New and Renewable Energy
Sir Dorabji Tata Trust

Institutional Partner Rajasthan Rural Institute of Development Management

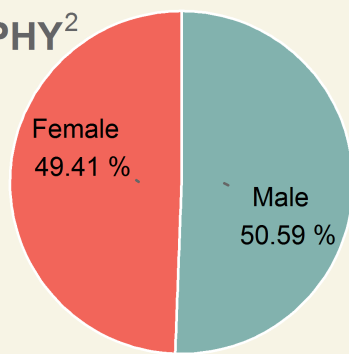
Kits supplied by M/S Tata Power Solar Systems Ltd.

Lamps assembled at Behind Bus Stand, Jhadol, Udaipur, Rajasthan

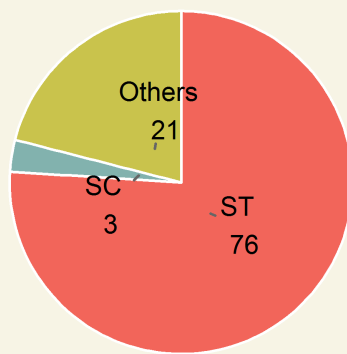


| Area | Population | Rural Population | Villages | Schools |
|---------------|------------|------------------|----------|---------|
| 1441.02 sq.km | 2,49,297 | 100% | 161 | 524 |

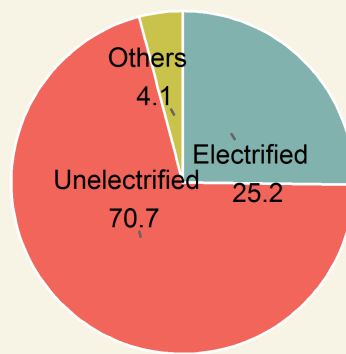
DEMOGRAPHY²



Gender

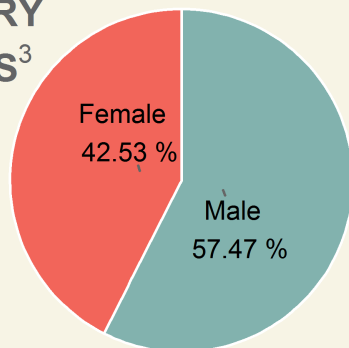


Category

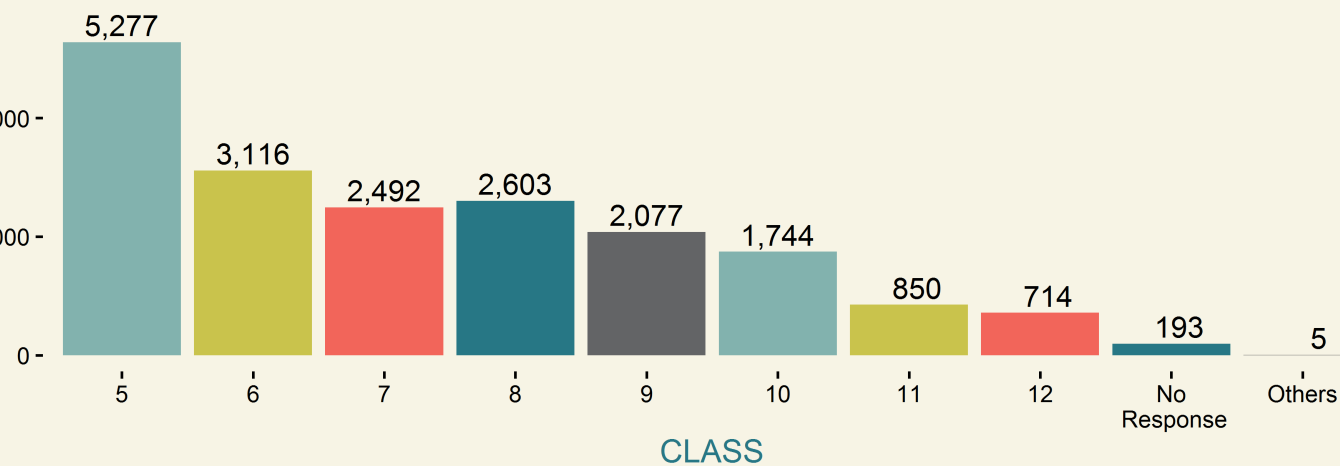


Household Electrification

BENEFICIARY STATISTICS³

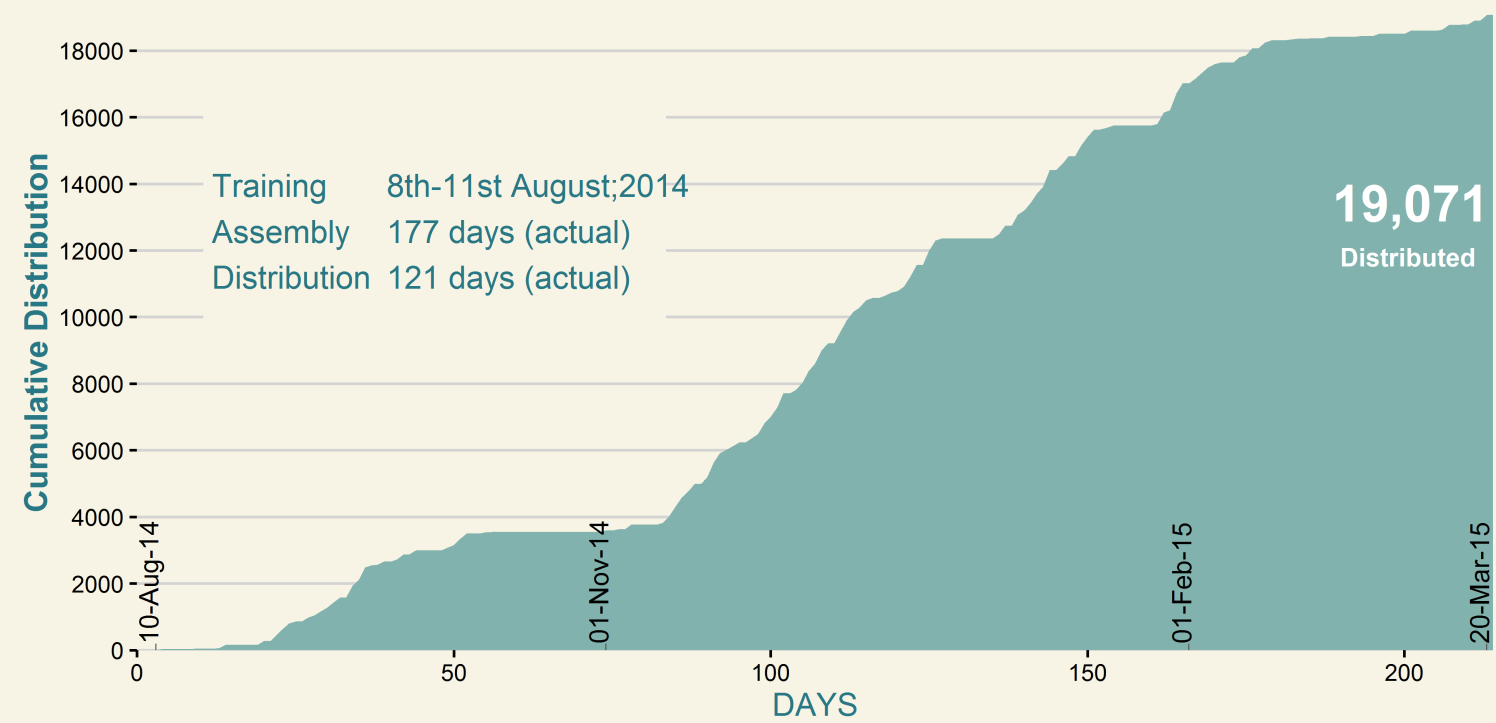


Beneficiaries

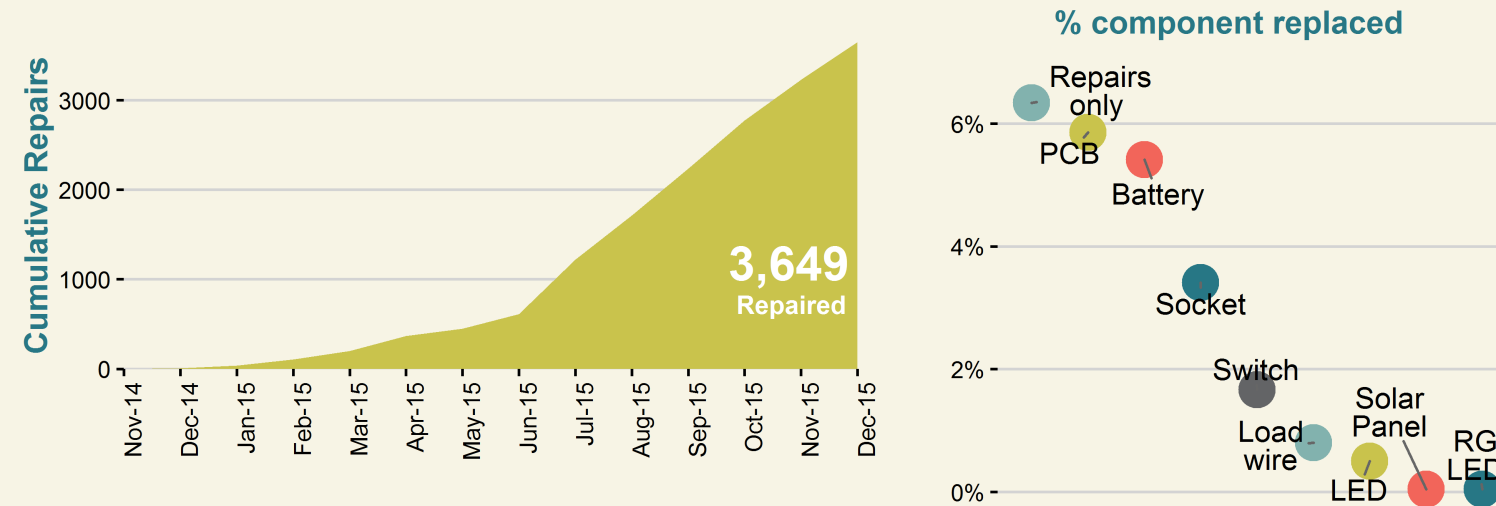


CLASS

LAMP ASSEMBLY & DISTRIBUTION⁴



LAMP REPAIR & MAINTENANCE⁵



CONTRIBUTION TO LOCAL ECONOMY⁶

| Category | Investment (INR) | Employment (man-days) | Assemblers | Distributors | SRC Managers | Coordinators |
|---------------------|------------------|-----------------------|--|---|--|---------------------------------------|
| ASSEMBLY | 1,90,710 | 1,770 | Babulal Garasiya, Prakash Vadera, Premchand Kapaya, Sukhlal Ninama, Ratanlal Gamar, Pritam Purohit, Laxmilal Meghwal | Bhagchand Garasiya, Govind Rajput, Bhurilal Kapaya, Punaram Vadera, Kalulal Katara, Rameshchand, Prakash Vadera | Ambalal Garasiya (Saira), Mohanlal Gameti (Nandeshma), Sandeep Meena (Gogunda), Prakesh Bhogra (Gogunda), Jagdish Joshi (Padwale Kala) | Nagin Patel, Vijay Kumar, Karan Singh |
| DISTRIBUTION | 2,86,065 | 1,210 | Kabiyalal Garasiya, Shankarlal Meena, Nitin Rajprohit | Premchand Kapaya, Sukhlal Ninama, Ratanlal Gamar | | |
| SoUL REPAIR CENTERS | 2,27,800 | 2,555 | | | | |
| COORDINATION | 8,97,389 | 1,007 | | | | |

1. Saturation is the percentage of the block's rural school enrolment (5th-12th) benefited. (Enrolment data source: NUEPA)
2. Demography and other block details are obtained from Census of India 2011.
3. Beneficiaries details (i.e., students who purchased SoUL) were collected at the time of distribution.

4. Lamp distributed to rural students via schools at INR 120/ lamp.
5. After-sales service was provided free-of-cost through SoUL Repair Centers (SRCs) established at village clusters.
6. Actuals may vary. Coordination includes local expenses such as rent, electricity, campaigning, local logistics, supervision, etc.

