

Begun Block, Chittaurgarh, Rajasthan

Students Benefited 9,916

Saturation¹ 88.68%

Funded by Ministry of New and Renewable Energy
Sir Dorabji Tata Trust

Institutional Partner Foundation for Ecological Security

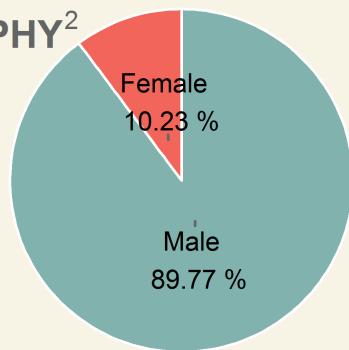
Kits supplied by M/s. Sirius Solar Energy Systems Pvt Ltd.

Lamps assembled at Vakil Colony, Tehsil Mandalgarh, District Bhilwara, RJ

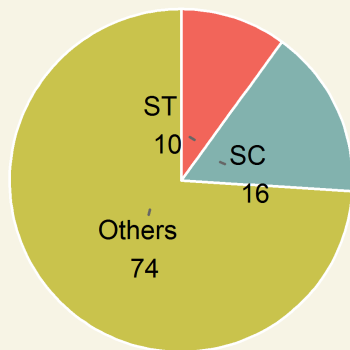


Area	Population	Rural Population	Villages	Schools
956.99 sq.km	1,35,340	84.7%	216	286

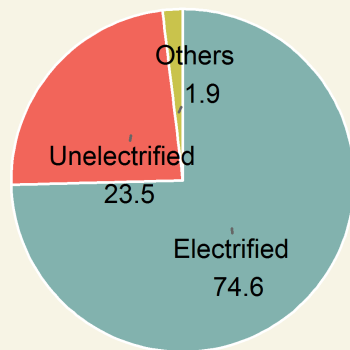
DEMOGRAPHY²



Gender

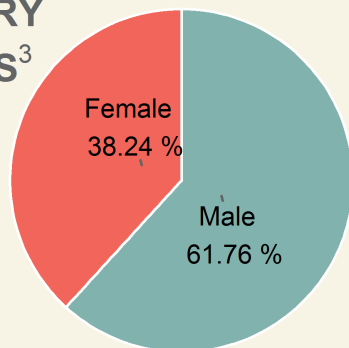


Category

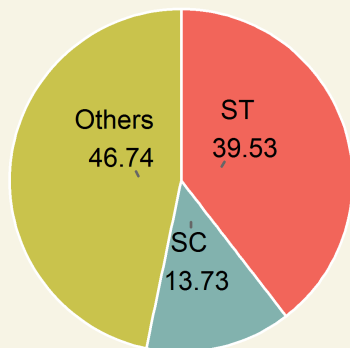


Household Electrification

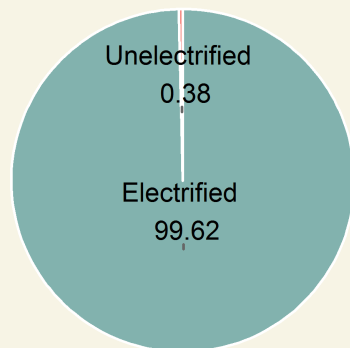
BENEFICIARY STATISTICS³



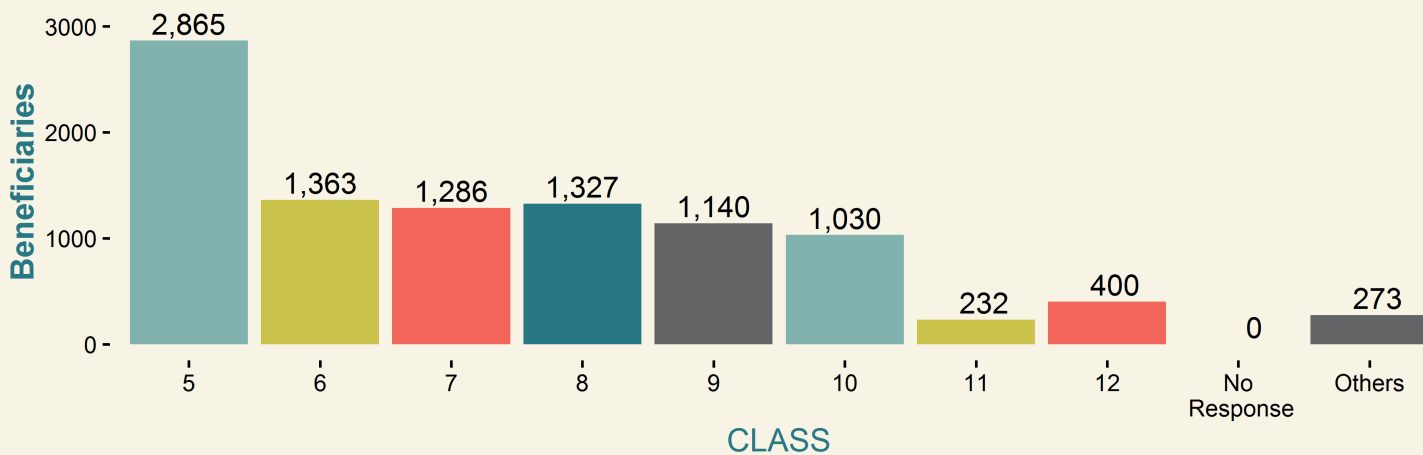
Beneficiaries



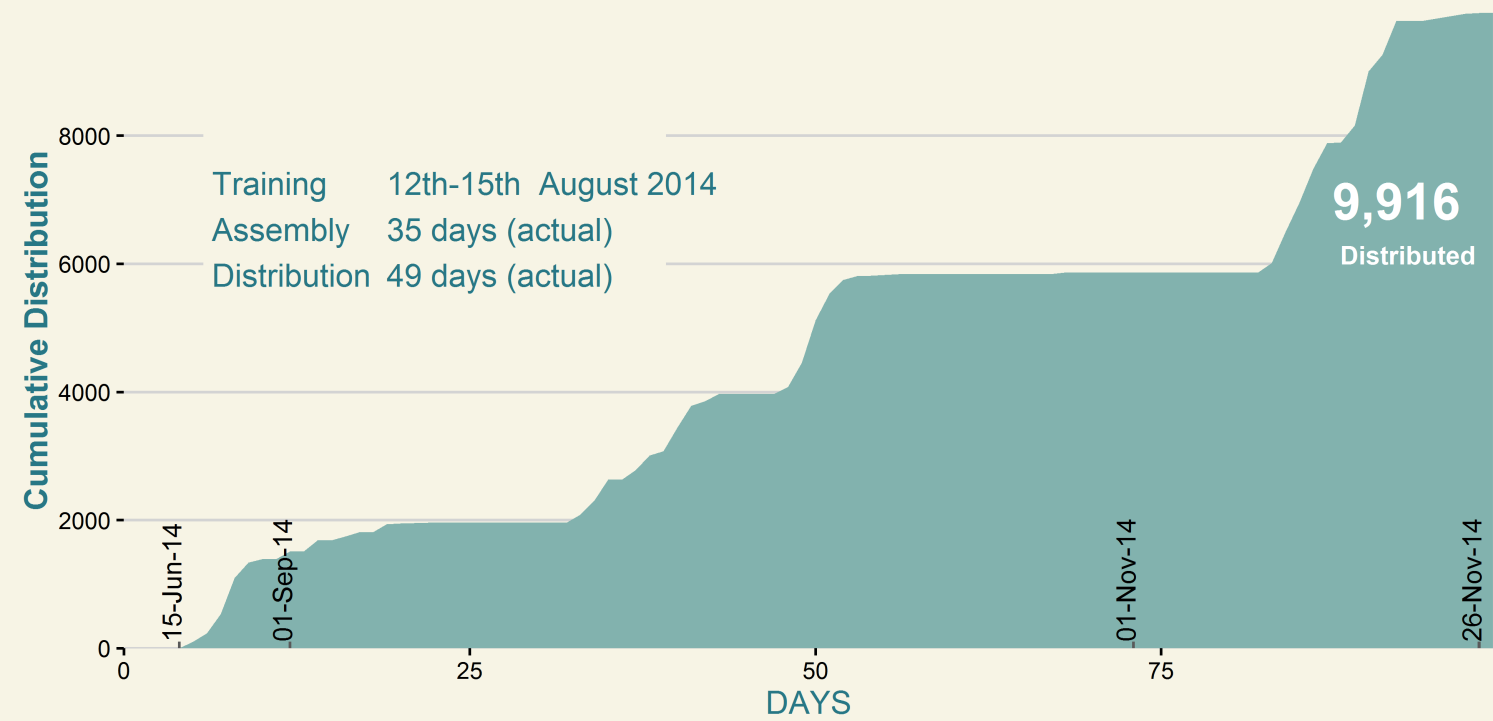
CLASS



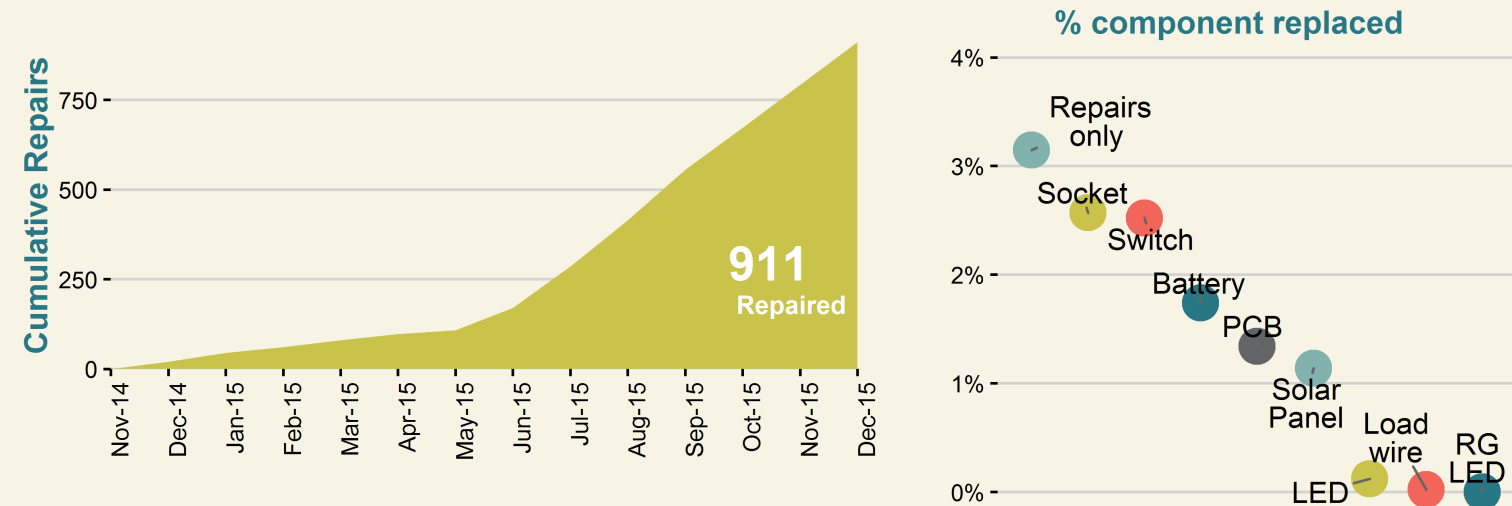
No Response



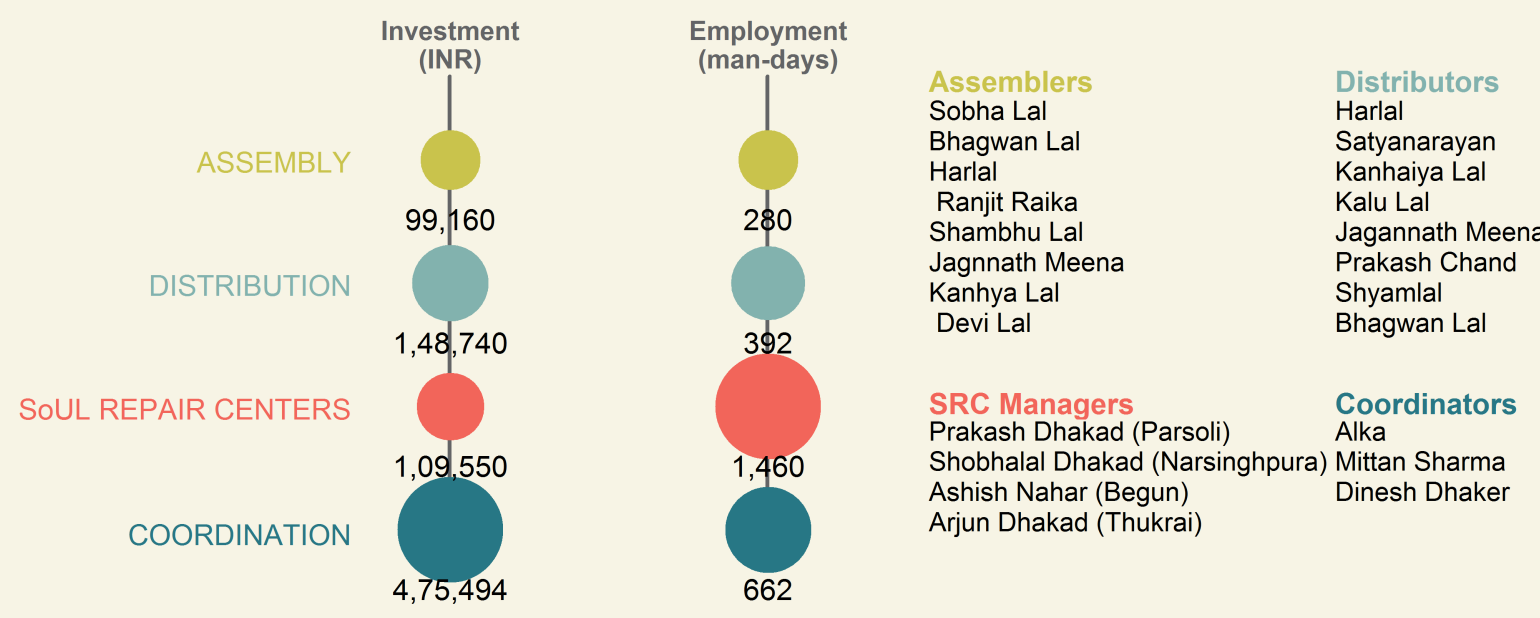
LAMP ASSEMBLY & DISTRIBUTION⁴



LAMP REPAIR & MAINTENANCE⁵



CONTRIBUTION TO LOCAL ECONOMY⁶



1. Saturation is the percentage of the block's rural school enrolment (5th-12th) benefited. (Enrolment data source: NUEPA)

2. Demography and other block details are obtained from Census of India 2011.

3. Beneficiaries details (i.e., students who purchased SoUL) were collected at the time of distribution.

4. Lamp distributed to rural students via schools at INR 120/ lamp.

5. After-sales service was provided free-of-cost through SoUL Repair Centers (SRCs) established at village clusters.

6. Actuals may vary. Coordination includes local expenses such as rent, electricity, campaigning, local logistics, supervision, etc.

