

# Tirla Block, Dhar, Madhya Pradesh

**Students Benefited 6,600**

**Saturation<sup>1</sup> 69.42%**

Funded by Ministry of New and Renewable Energy  
Sir Dorabji Tata Trust

Institutional Partner Centre for Advanced Research & Development (CARD);

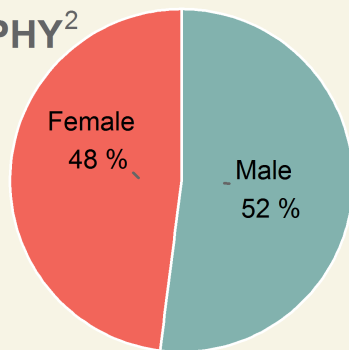
Kits supplied by M/s. Sirius Solar Energy Systems Pvt Ltd

Lamps assembled at Infront of Eminent School, Mandu Road, Dhar, MP

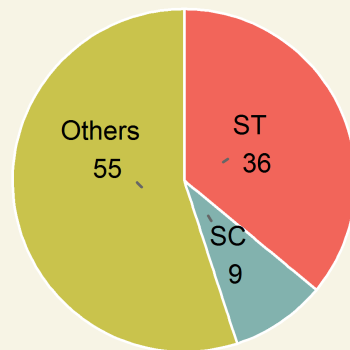


Area	Population	Rural Population	Villages	Schools
529.9 sq.km	1,97,376	88.33%	144	287

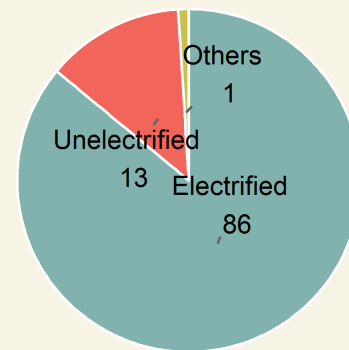
## DEMOGRAPHY<sup>2</sup>



Gender

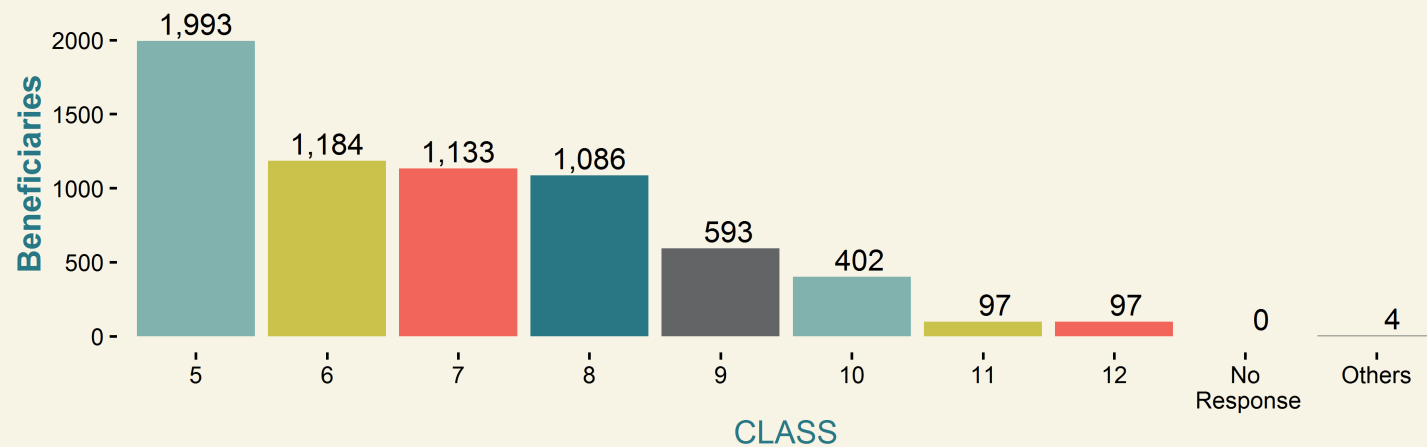
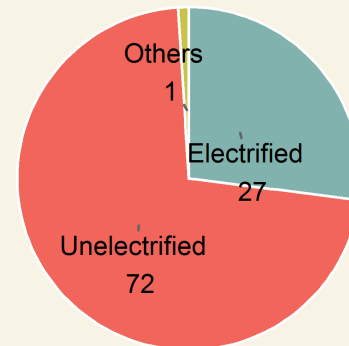
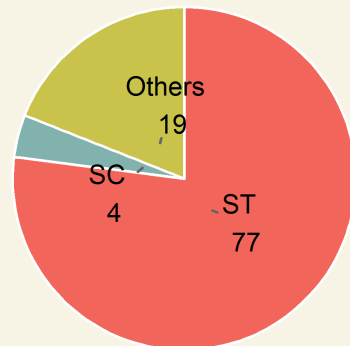
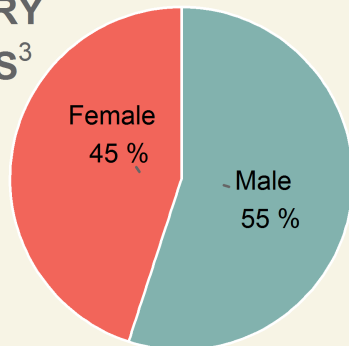


Category

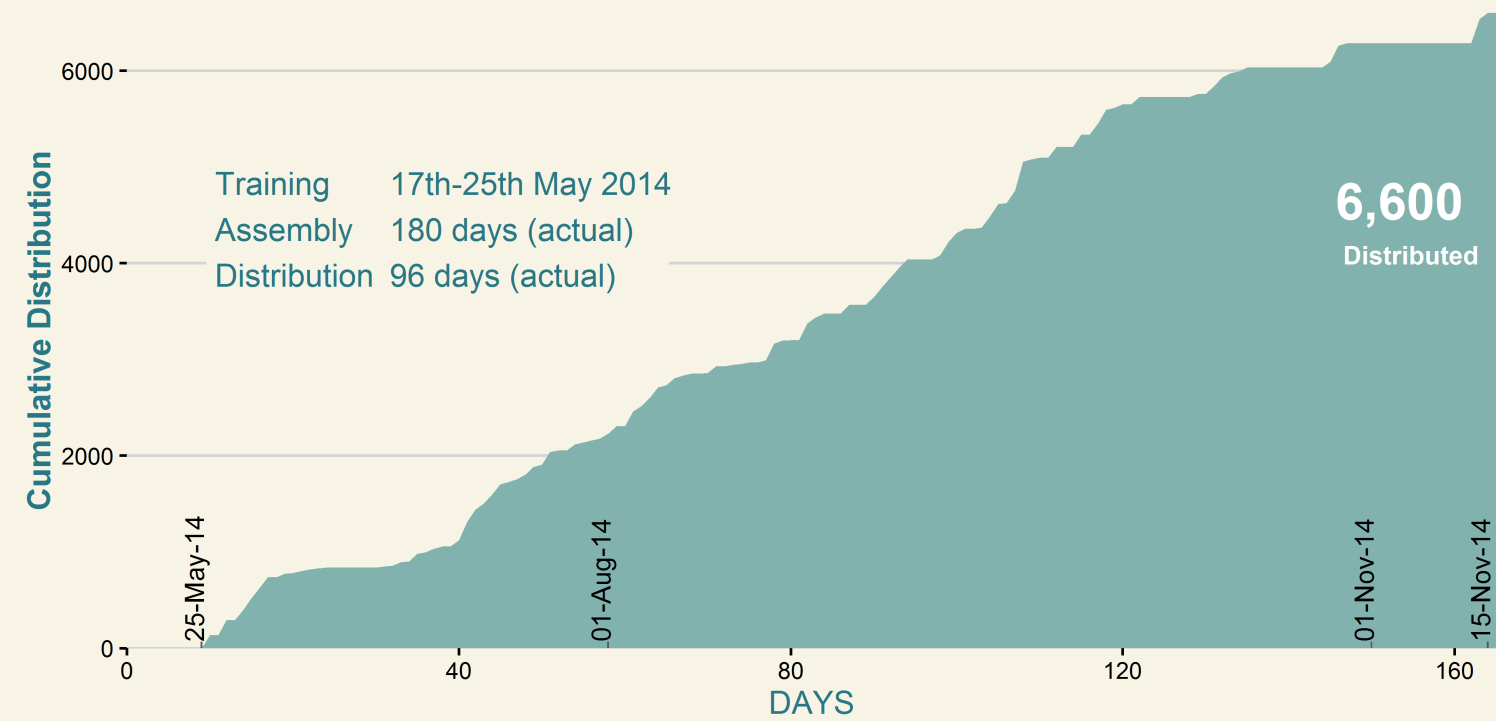


Household Electrification

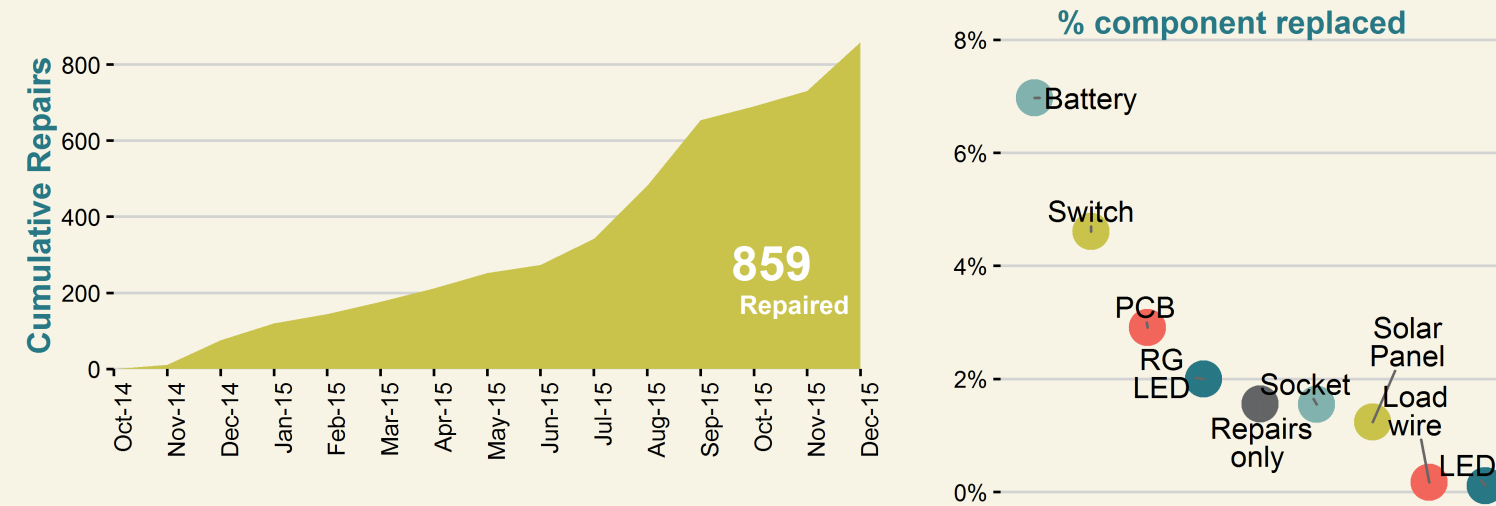
## BENEFICIARY STATISTICS<sup>3</sup>



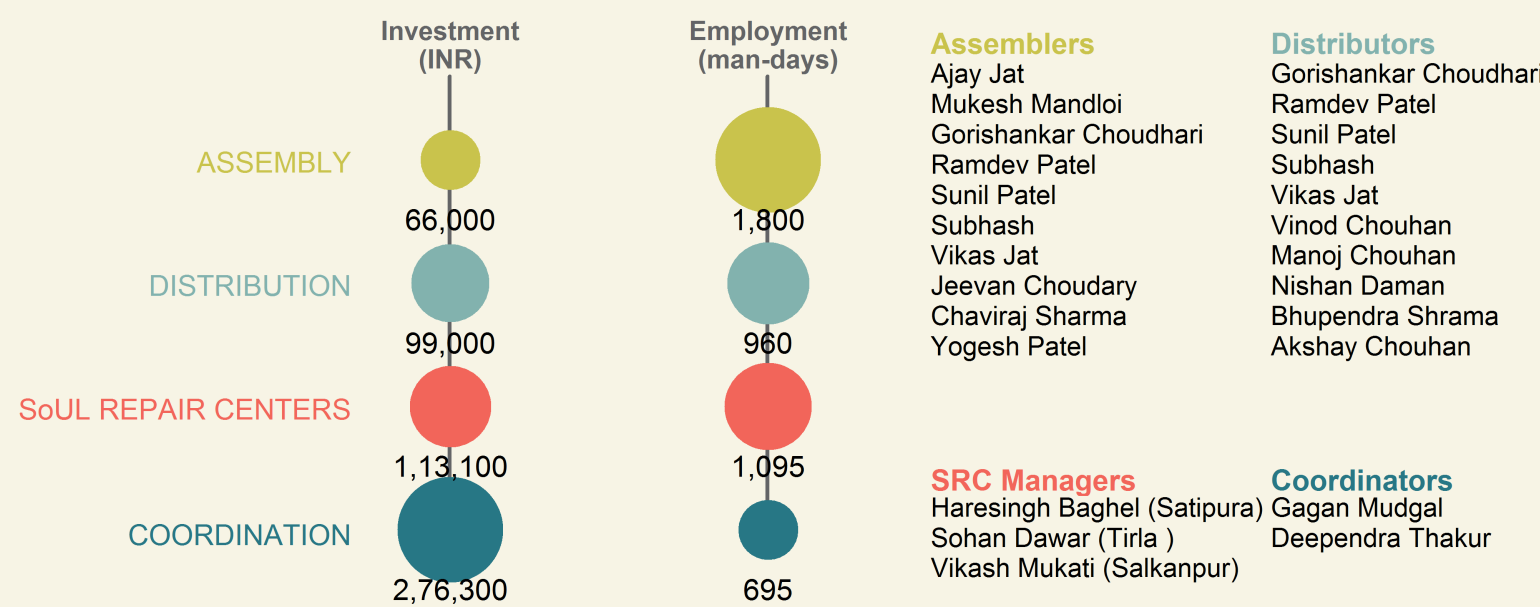
## LAMP ASSEMBLY & DISTRIBUTION<sup>4</sup>



## LAMP REPAIR & MAINTENANCE<sup>5</sup>



## CONTRIBUTION TO LOCAL ECONOMY<sup>6</sup>



1. Saturation is the percentage of the block's rural school enrolment (5th-12th) benefited. (Enrolment data source: NUEPA)

2. Demography and other block details are obtained from Census of India 2011.

3. Beneficiaries details (i.e., students who purchased SoUL) were collected at the time of distribution.

4. Lamp distributed to rural students via schools at INR 120/ lamp.

5. After-sales service was provided free-of-cost through SoUL Repair Centers (SRCs) established at village clusters.

6. Actuals may vary. Coordination includes local expenses such as rent, electricity, campaigning, local logistics, supervision, etc.

