

Kotma Block, Annupur, Madhya Pradesh

Students Benefited 10,145

Saturation¹ 106.98%

Funded by Ministry of New and Renewable Energy
Madhya Pradesh Government

Institutional Partner Sahjeevan Samiti

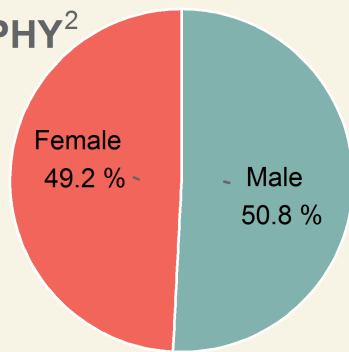
Kits supplied by Thrive Solar Energy Pvt. Ltd.

Lamps assembled at Village-Bartar, Tehsil-Jaitpur, Shahdol, MP

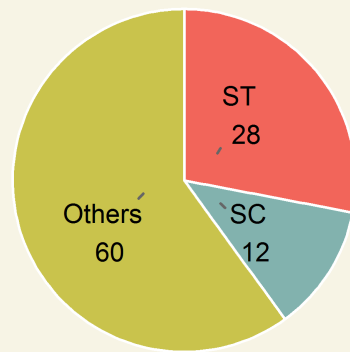


| Area | Population | Rural Population | Villages | Schools |
|--------------|------------|------------------|----------|---------|
| 305.08 sq.km | 1,20,533 | 48.24% | 69 | 251 |

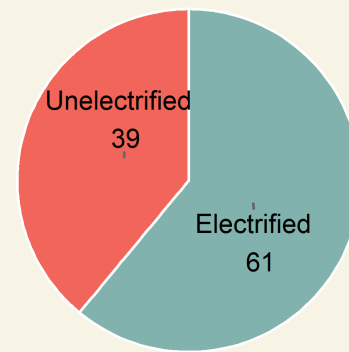
DEMOGRAPHY²



Gender

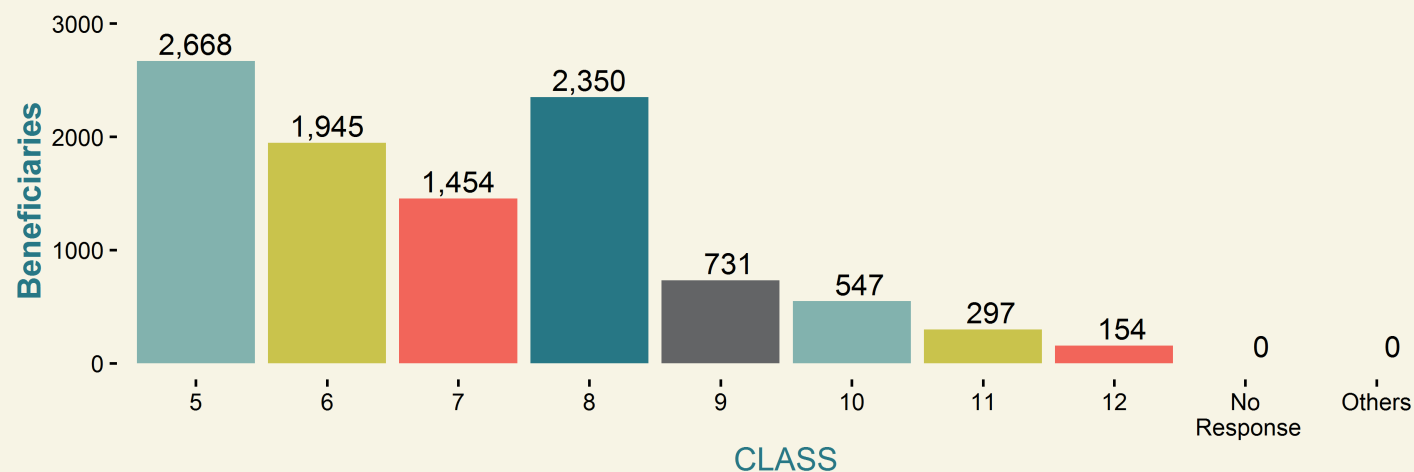
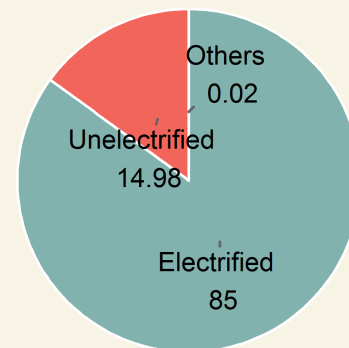
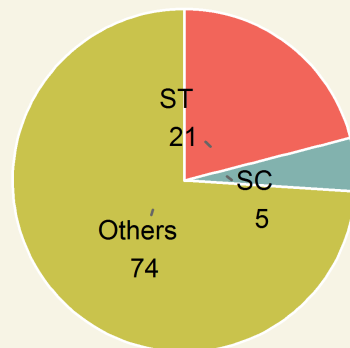
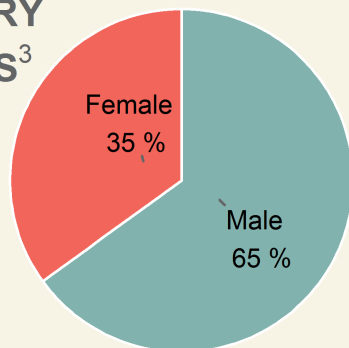


Category



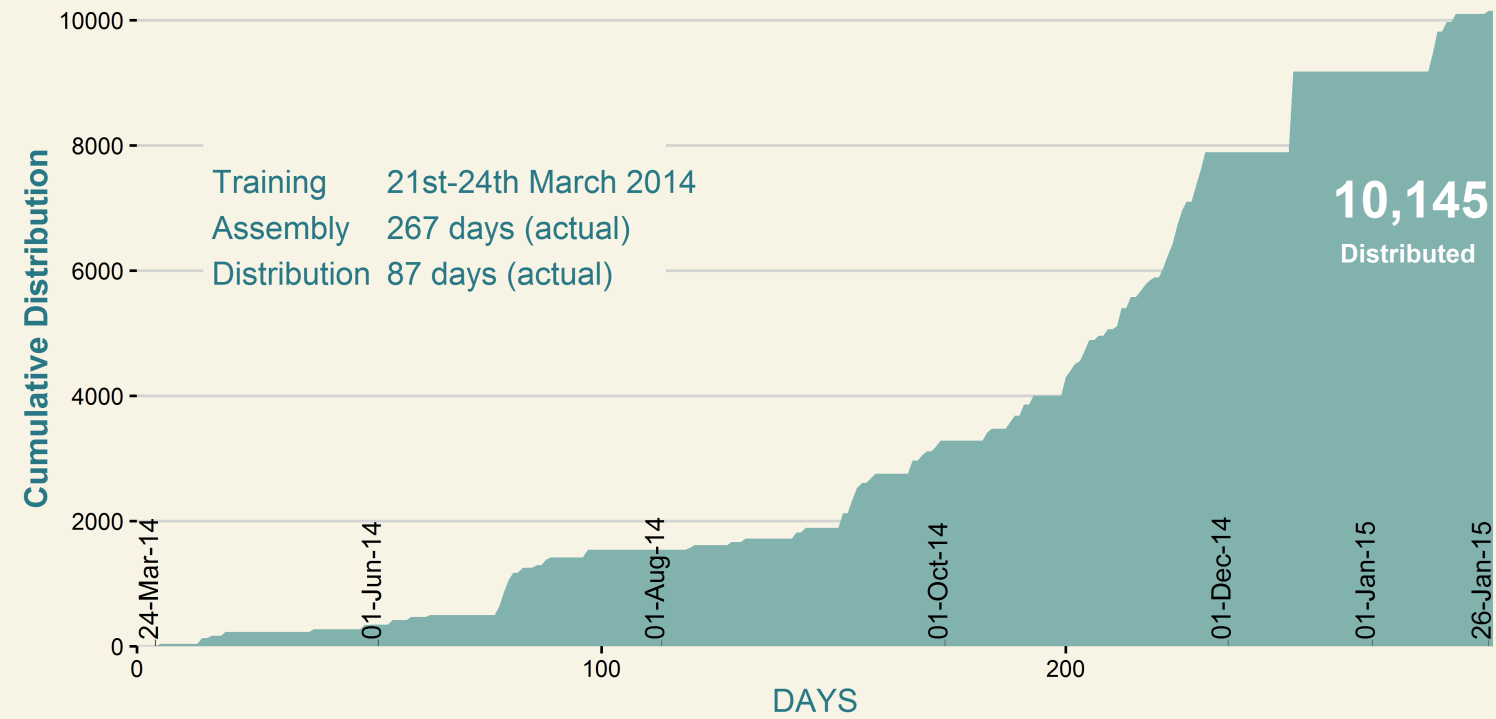
Household Electrification

BENEFICIARY STATISTICS³

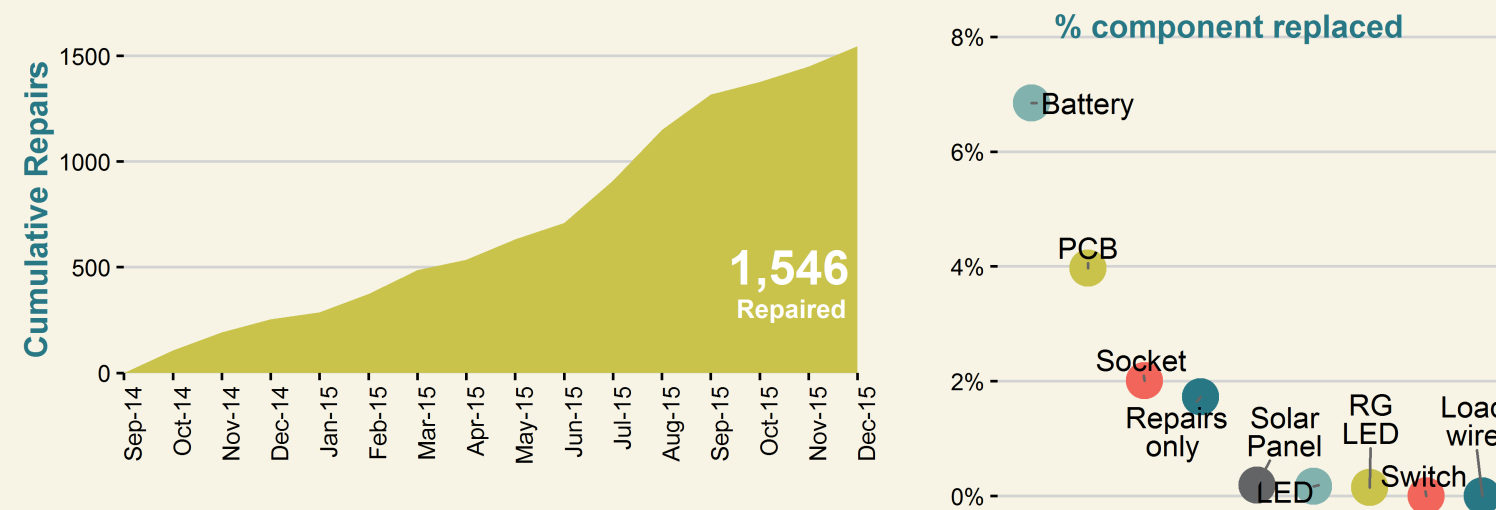


CLASS

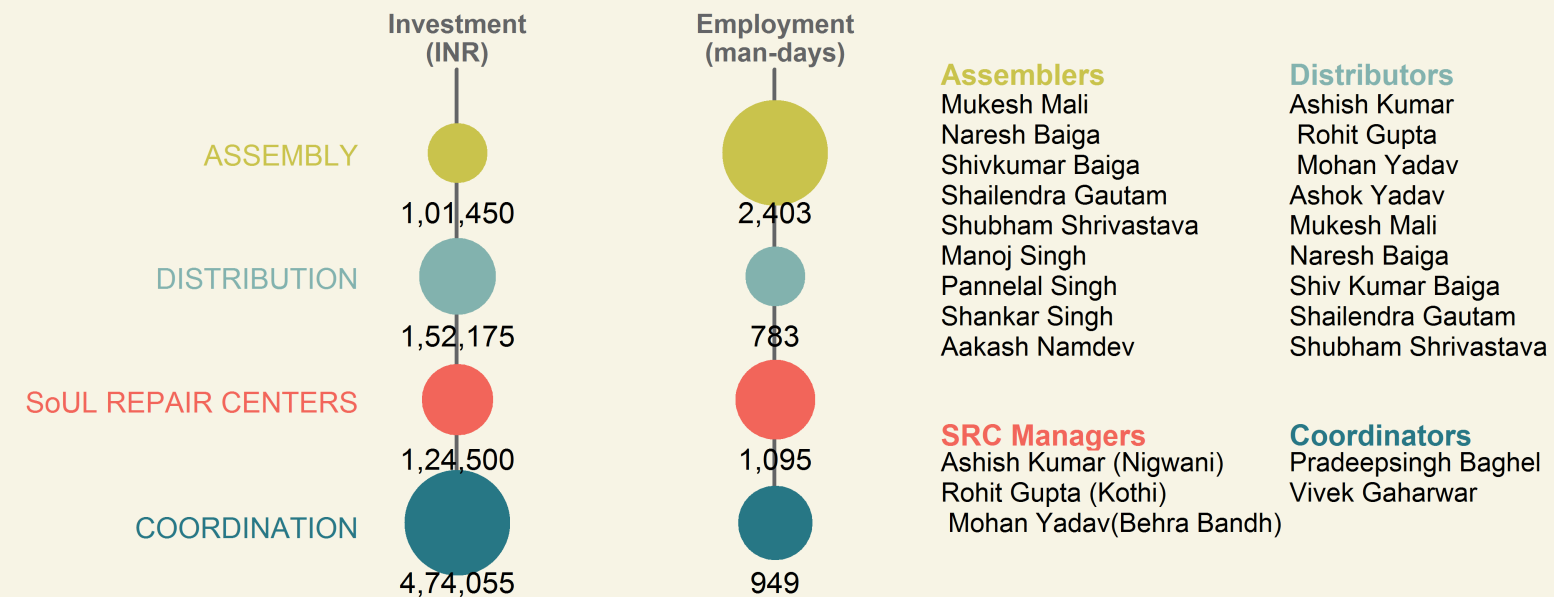
LAMP ASSEMBLY & DISTRIBUTION⁴



LAMP REPAIR & MAINTENANCE⁵



CONTRIBUTION TO LOCAL ECONOMY⁶



1. Saturation is the percentage of the block's rural school enrolment (5th-12th) benefited. (Enrolment data source: NUEPA)

2. Demography and other block details are obtained from Census of India 2011.

3. Beneficiaries details (i.e., students who purchased SoUL) were collected at the time of distribution.

4. Lamp distributed to rural students via schools at INR 120/ lamp.

5. After-sales service was provided free-of-cost through SoUL Repair Centers (SRCs) established at village clusters.

6. Actuals may vary. Coordination includes local expenses such as rent, electricity, campaigning, local logistics, supervision, etc.

