

Ghughri Block, Mandla, Madhya Pradesh

Students Benefited 10,800

Saturation¹ 88.96%

Funded by Ministry of New and Renewable Energy
Madhya Pradesh Government

Institutional Partner Centre for Advanced Research & Development (CARD)

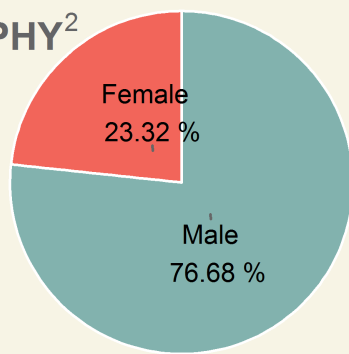
Kits supplied by M/s.Sirius Solar Energy Systems Pvt Ltd

Lamps assembled at Village-Gwara, Post Ghughri, District Mandla, MP

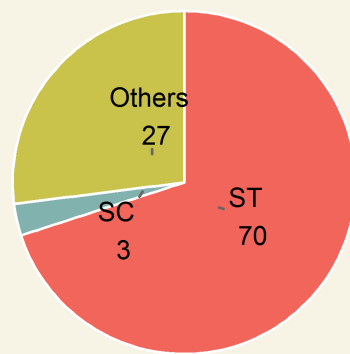


Area	Population	Rural Population	Villages	Schools
670.16 sq.km	1,72,823	100%	96	295

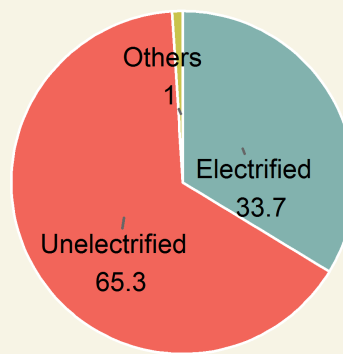
DEMOGRAPHY²



Gender

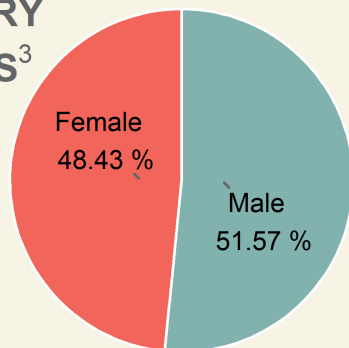


Category

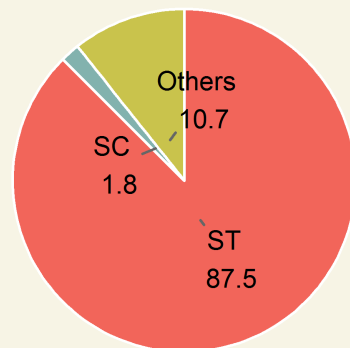


Household Electrification

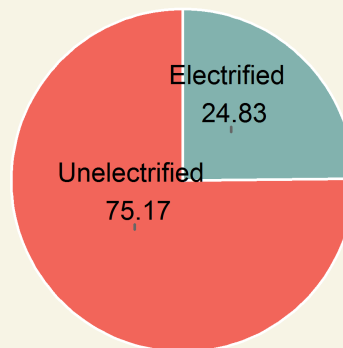
BENEFICIARY STATISTICS³



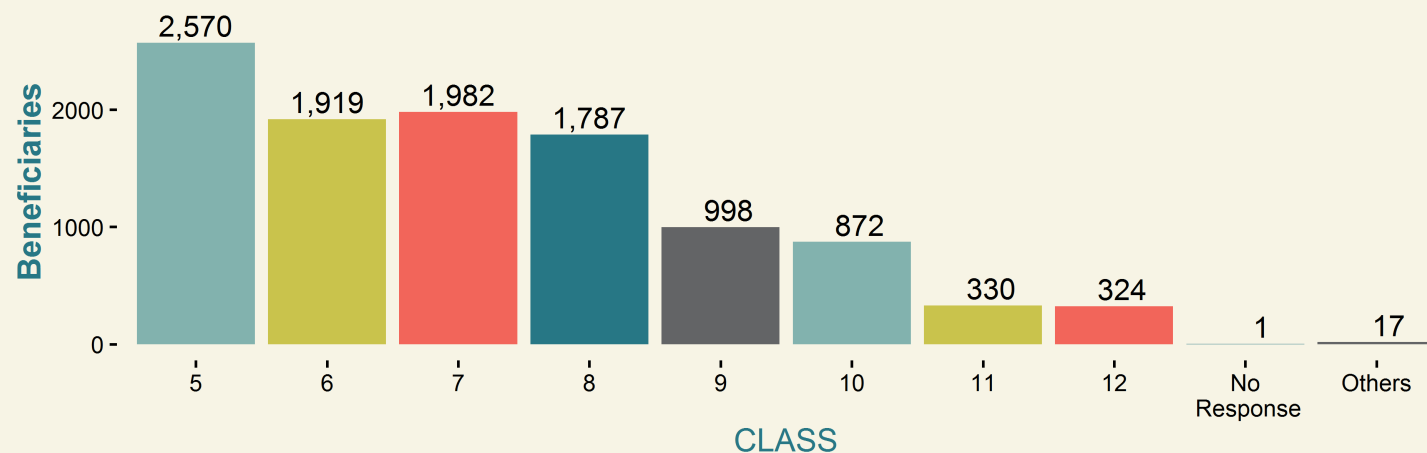
Gender



Category

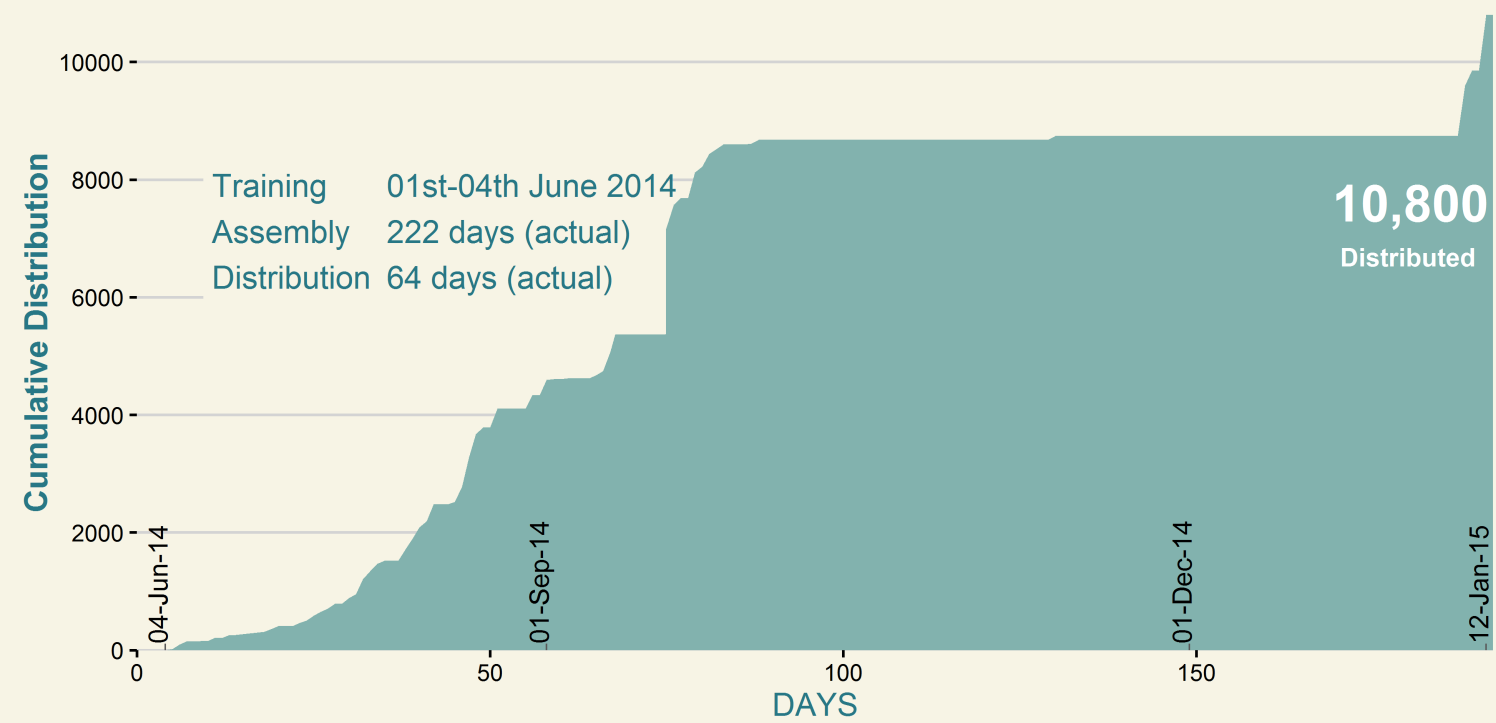


Household Electrification

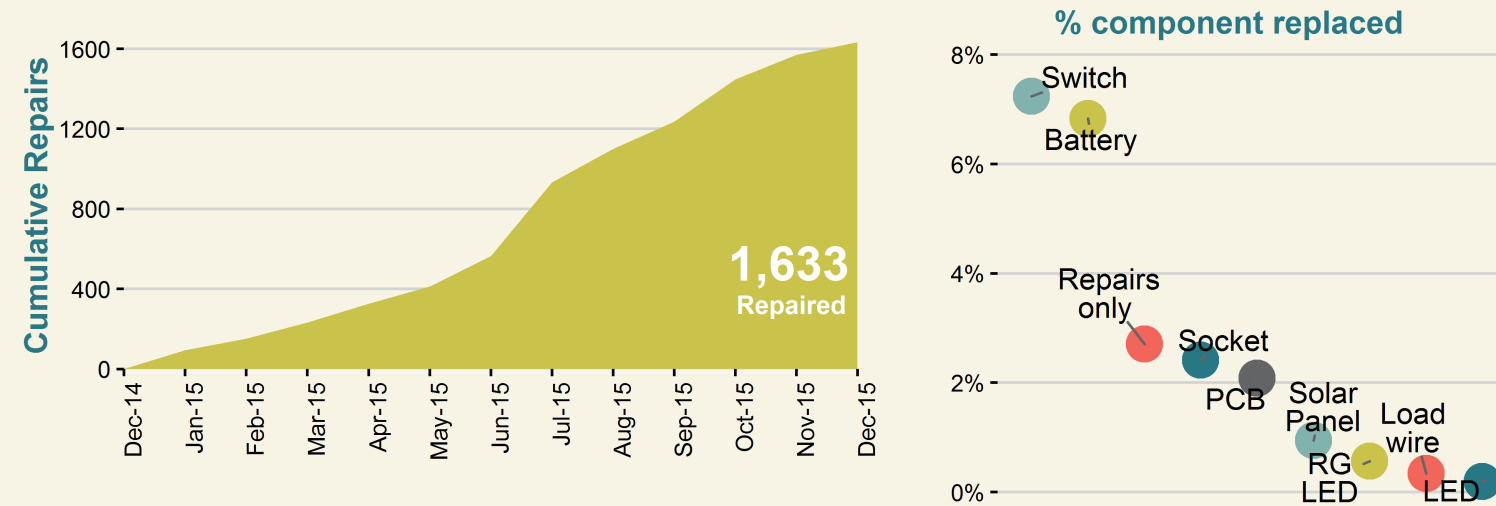


CLASS

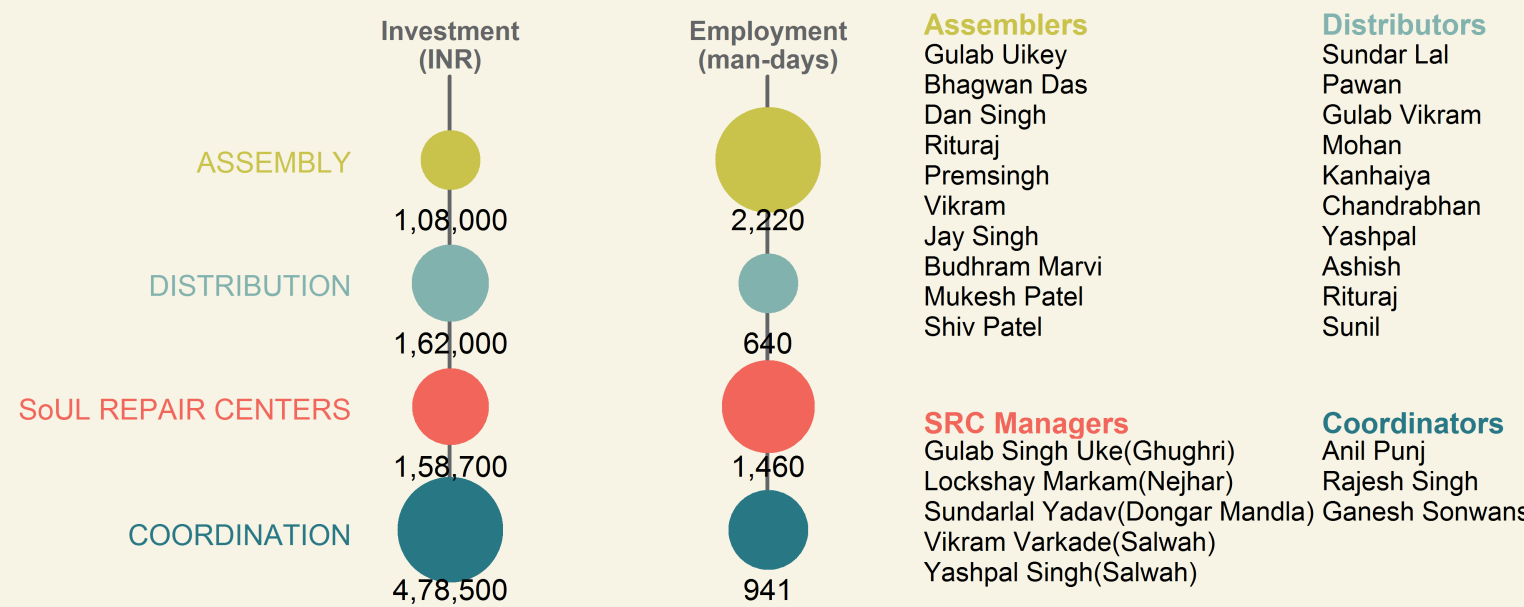
LAMP ASSEMBLY & DISTRIBUTION⁴



LAMP REPAIR & MAINTENANCE⁵



CONTRIBUTION TO LOCAL ECONOMY⁶



1. Saturation is the percentage of the block's rural school enrolment (5th-12th) benefited. (Enrolment data source: NUEPA)

2. Demography and other block details are obtained from Census of India 2011.

3. Beneficiaries details (i.e., students who purchased SoUL) were collected at the time of distribution.

4. Lamp distributed to rural students via schools at INR 120/ lamp.

5. After-sales service was provided free-of-cost through SoUL Repair Centers (SRCs) established at village clusters.

6. Actuals may vary. Coordination includes local expenses such as rent, electricity, campaigning, local logistics, supervision, etc.

