

# Ghodadongri Block, Betul, Madhya Pradesh

**Students Benefited 16,554**

**Saturation<sup>1</sup> 68.97%**

Funded by Ministry of New and Renewable Energy  
Government of Madhya Pradesh

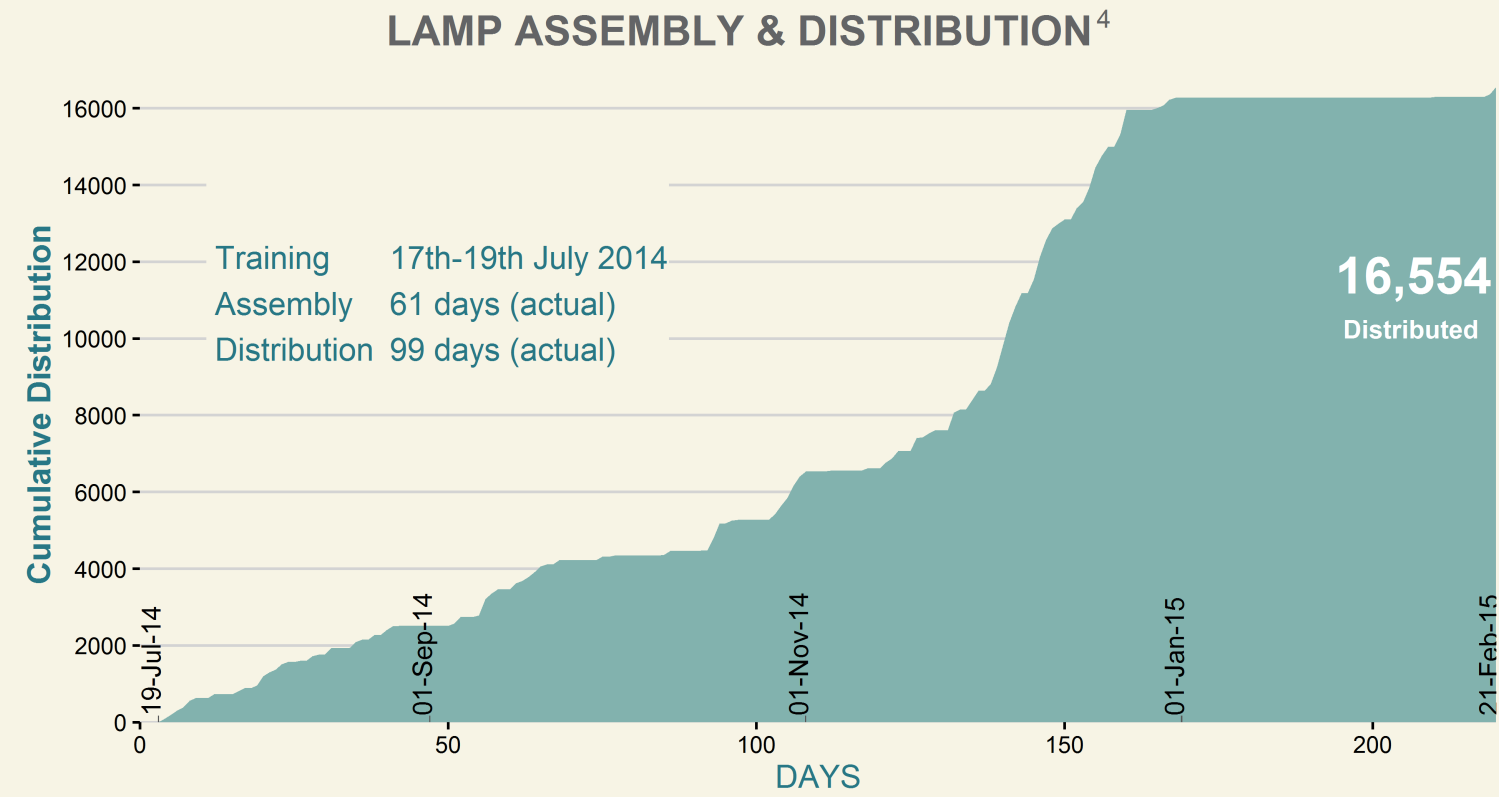
Institutional Partner BAIF Development Research Foundation

Kits supplied by Thrive Solar Energy Pvt. Ltd.

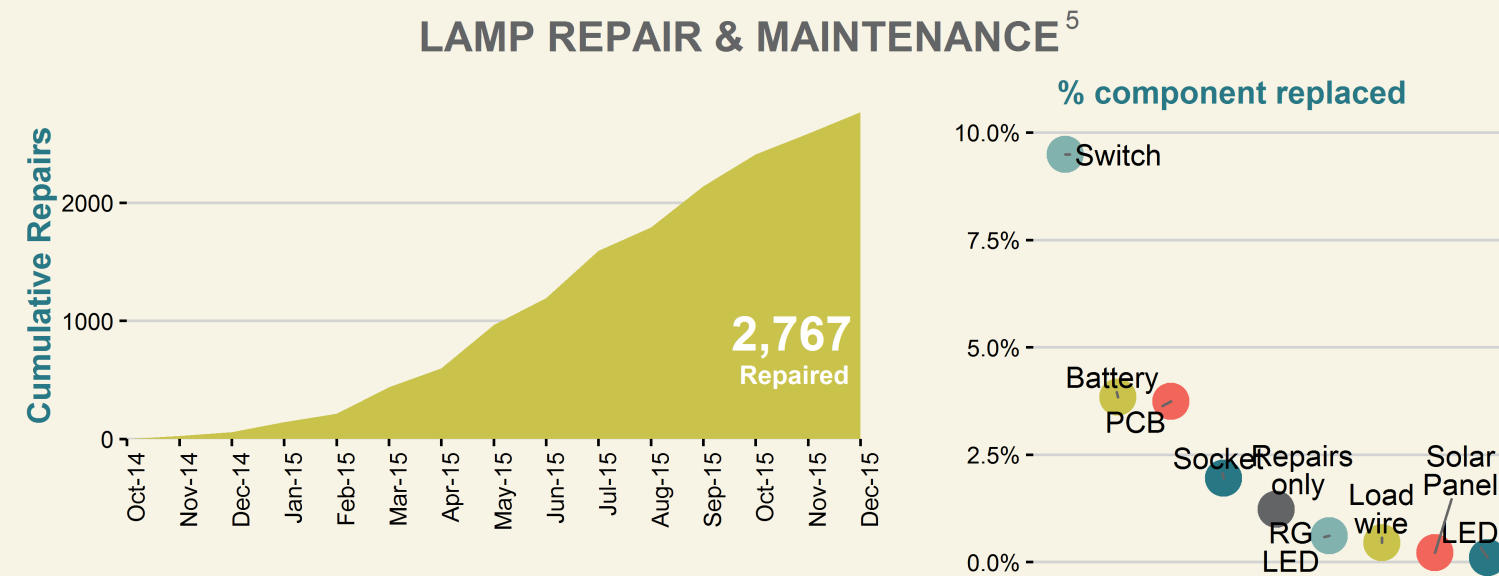
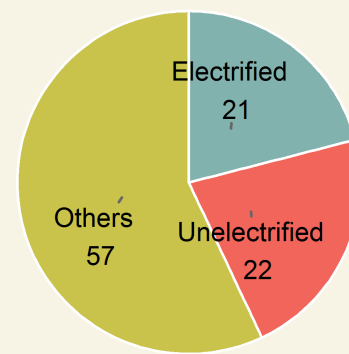
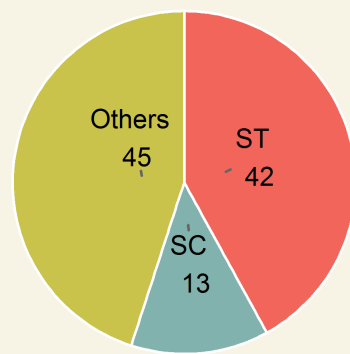
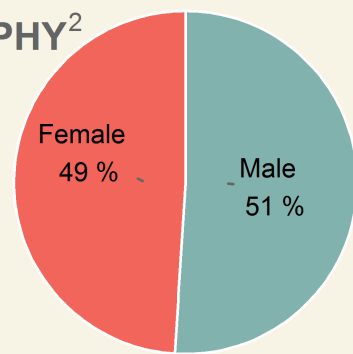
Lamps assembled at Village-Padar, Post-Padar, District Betul, M.P.



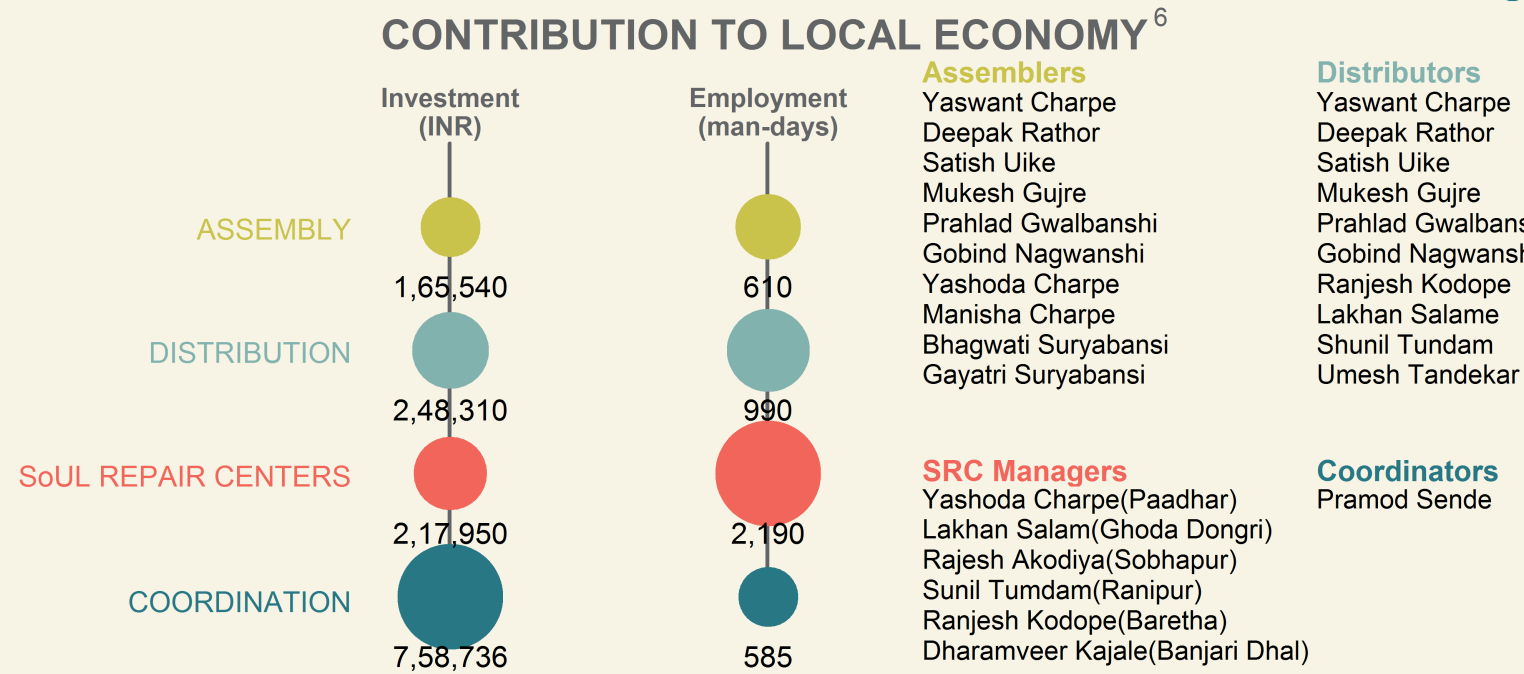
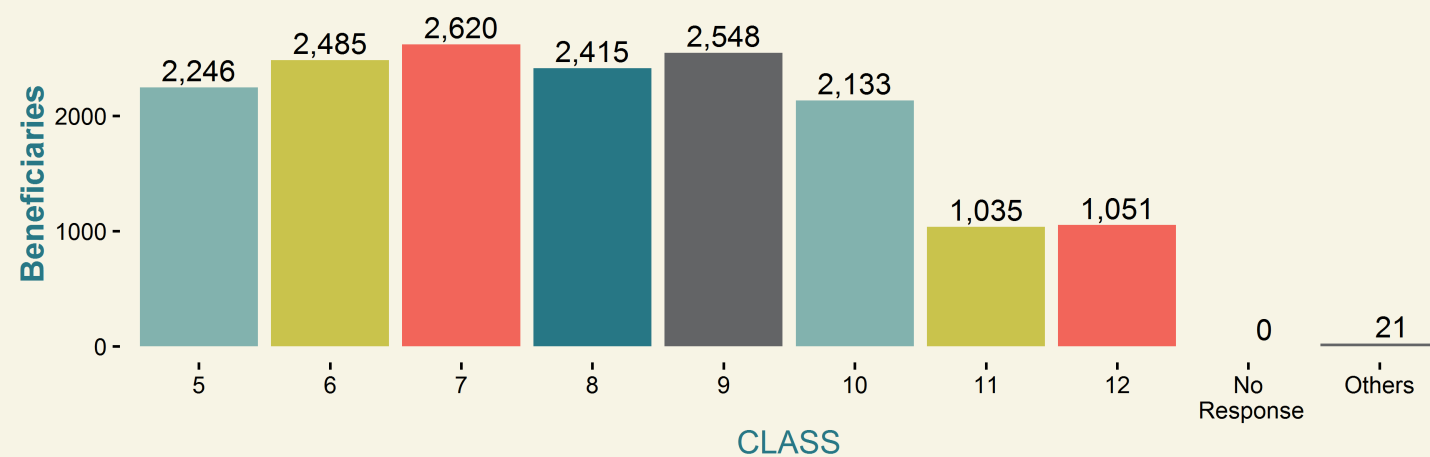
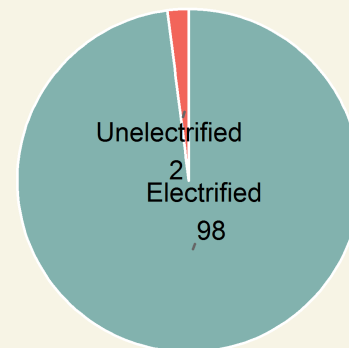
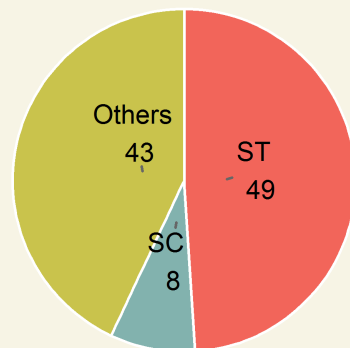
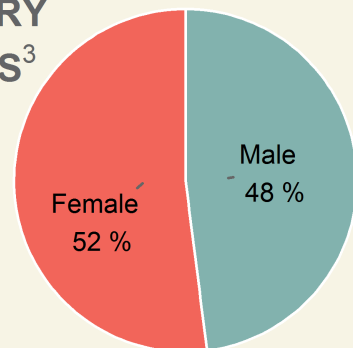
Area	Population	Rural Population	Villages	Schools
754.49 sq.km	2,35,784	59.31%	156	424



## DEMOGRAPHY<sup>2</sup>



## BENEFICIARY STATISTICS<sup>3</sup>



1. Saturation is the percentage of the block's rural school enrolment (5th-12th) benefited. (Enrolment data source: NUEPA)

2. Demography and other block details are obtained from Census of India 2011.

3. Beneficiaries details (i.e., students who purchased SoUL) were collected at the time of distribution.

4. Lamp distributed to rural students via schools at INR 120/ lamp.

5. After-sales service was provided free-of-cost through SoUL Repair Centers (SRCs) established at village clusters.

6. Actuals may vary. Coordination includes local expenses such as rent, electricity, campaigning, local logistics, supervision, etc.

