

# Burhar Block, Shahdol, Madhya Pradesh

**Students Benefited 20,663**

**Saturation<sup>1</sup> 70.25%**

Funded by Ministry of New and Renewable Energy  
Madhya Pradesh Government

Institutional Partner Sahjeevan Samiti

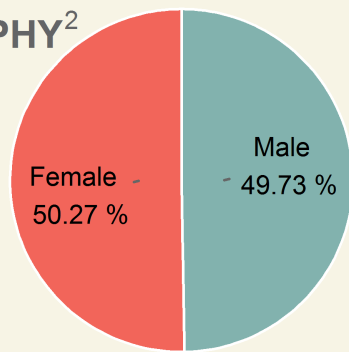
Kits supplied by Thrive Solar Energy Pvt. Ltd.; Hyderabad

Lamps assembled at Village Bartar, Tehsil - Jaitpur, District Shahdol, MP

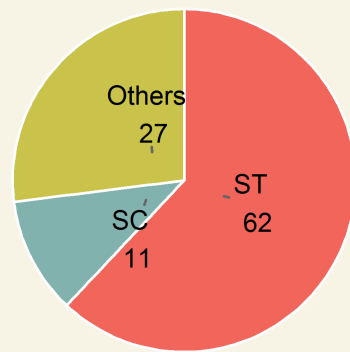


Area	Population	Rural Population	Villages	Schools
1184.97 sq.km	1,62,492	162492%	198	536

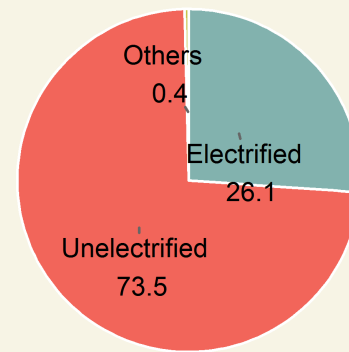
## DEMOGRAPHY<sup>2</sup>



Gender

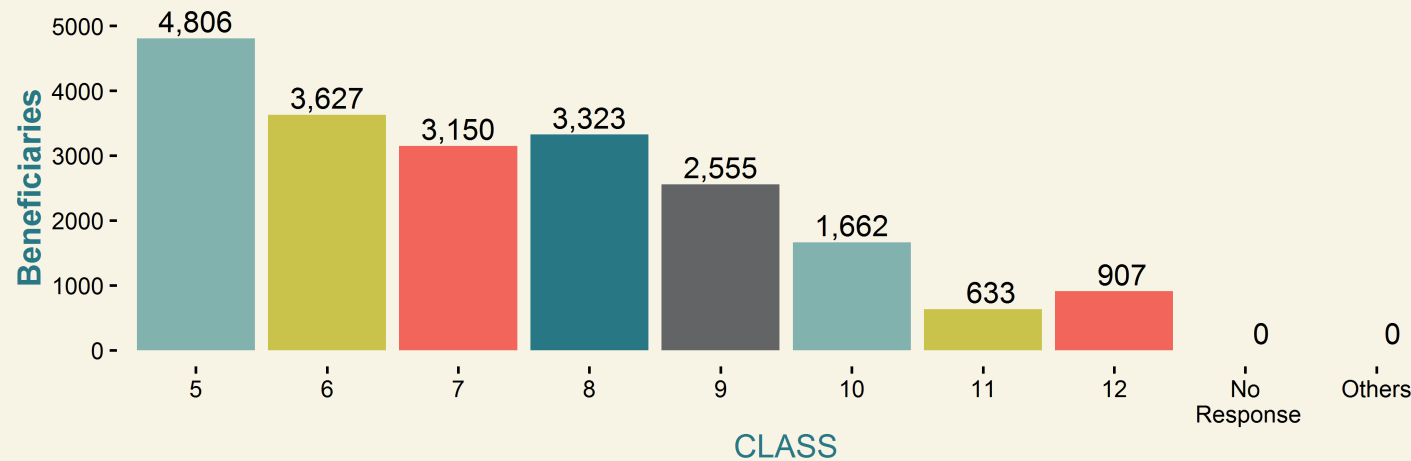
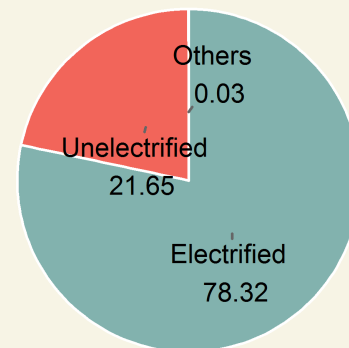
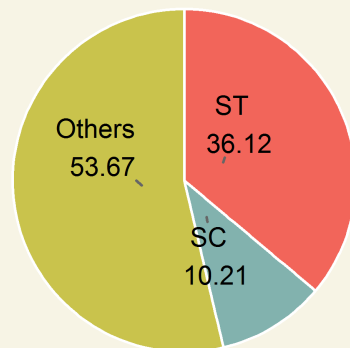
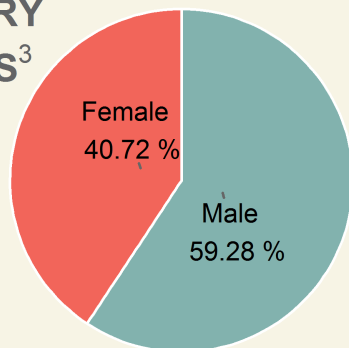


Category



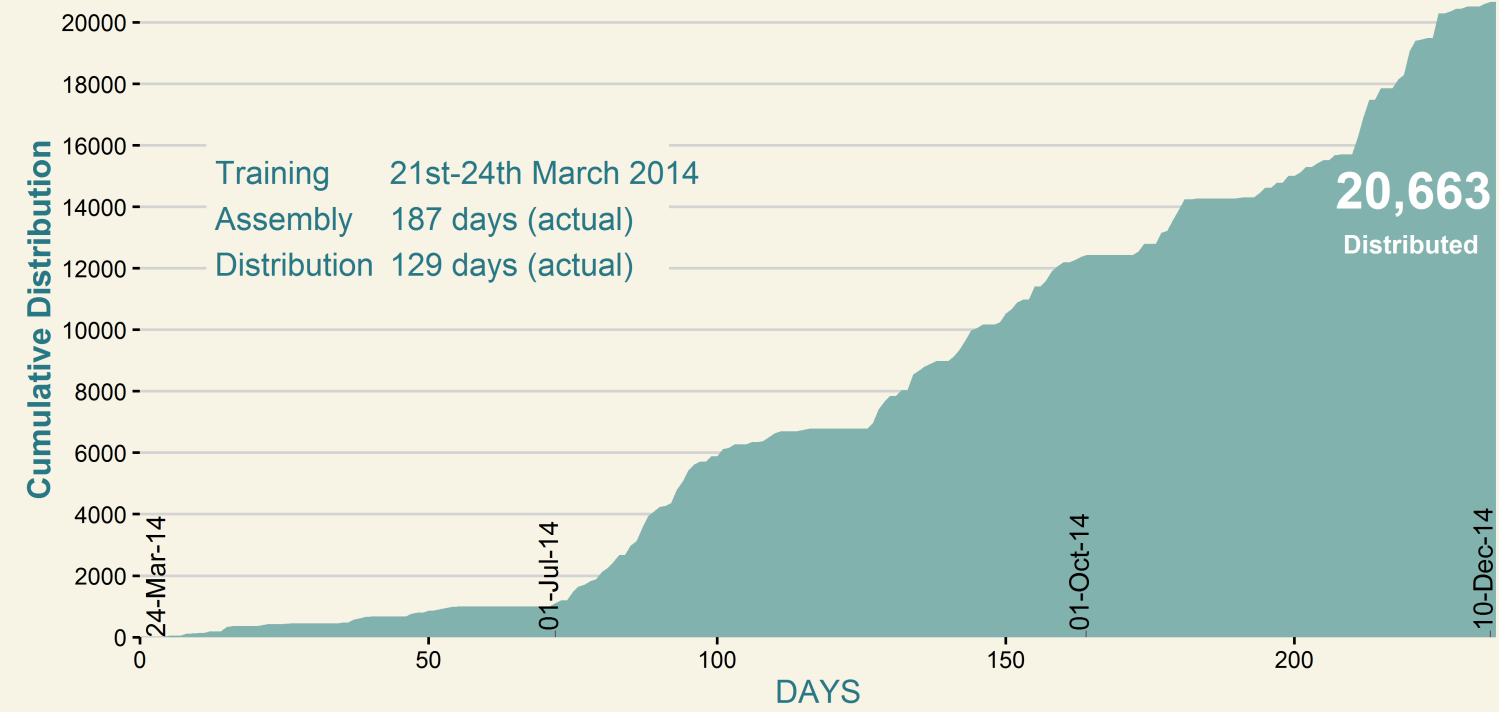
Household Electrification

## BENEFICIARY STATISTICS<sup>3</sup>

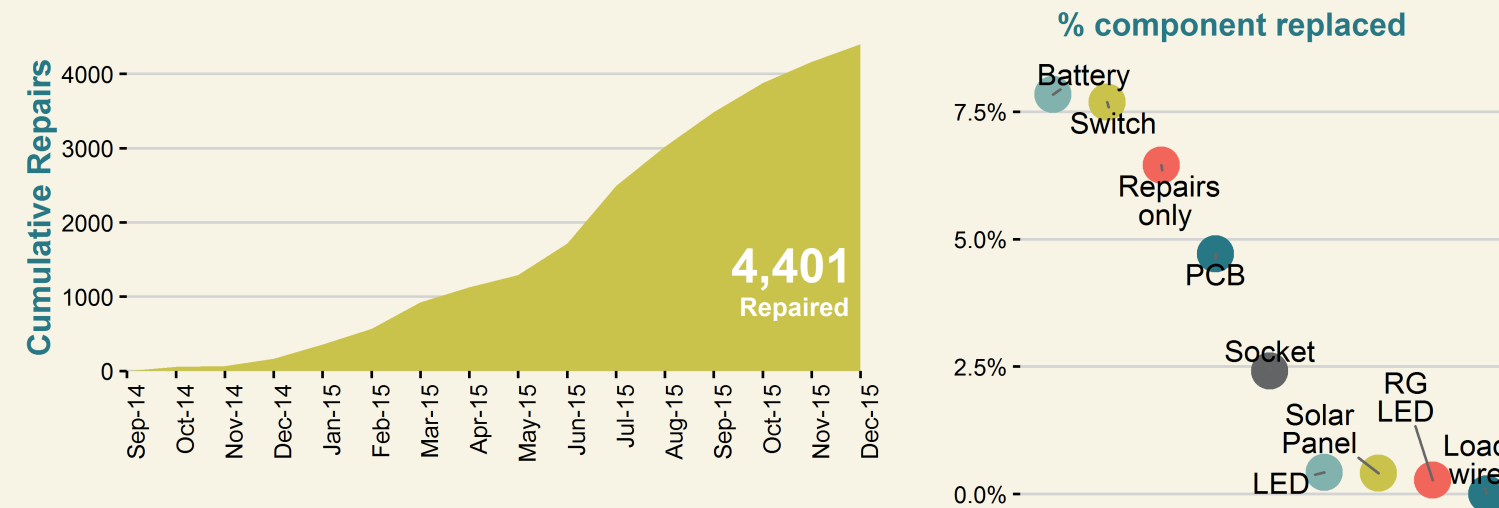


CLASS

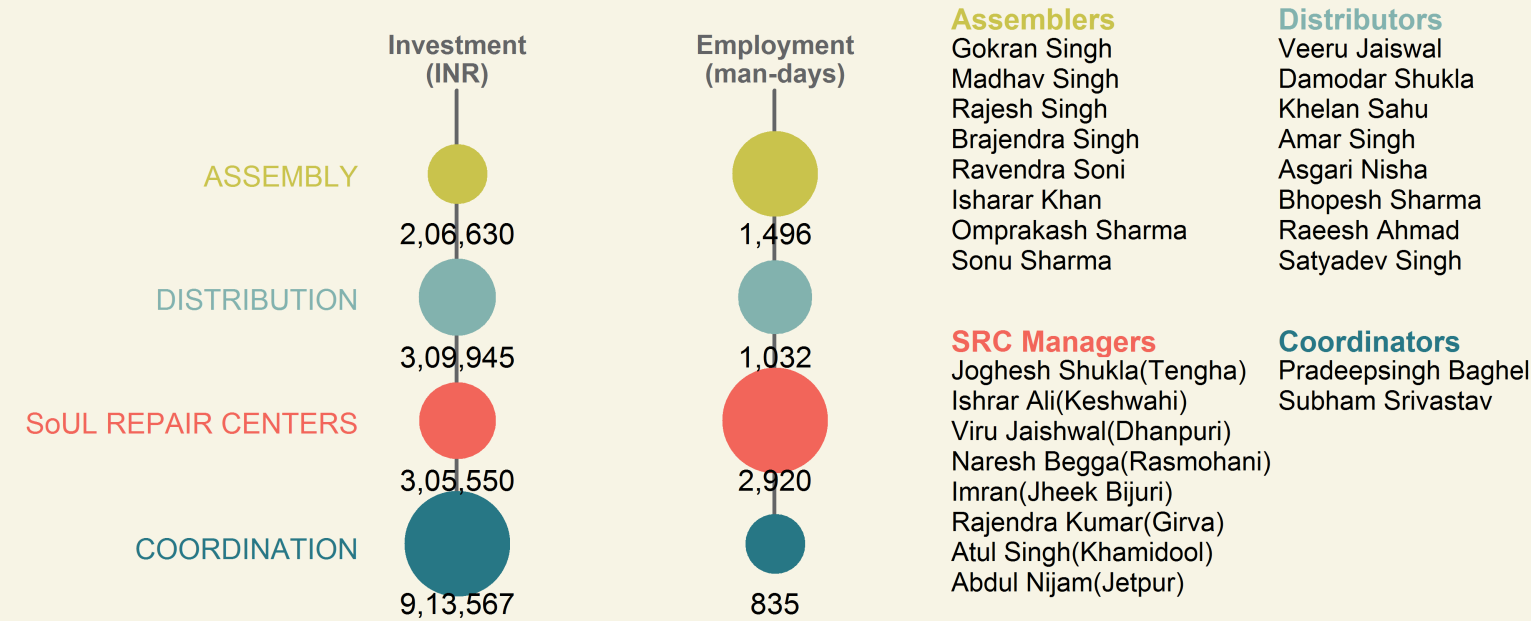
## LAMP ASSEMBLY & DISTRIBUTION<sup>4</sup>



## LAMP REPAIR & MAINTENANCE<sup>5</sup>



## CONTRIBUTION TO LOCAL ECONOMY<sup>6</sup>



1. Saturation is the percentage of the block's rural school enrolment (5th-12th) benefited. (Enrolment data source: NUEPA)

2. Demography and other block details are obtained from Census of India 2011.

3. Beneficiaries details (i.e., students who purchased SoUL) were collected at the time of distribution.

4. Lamp distributed to rural students via schools at INR 120/ lamp.

5. After-sales service was provided free-of-cost through SoUL Repair Centers (SRCs) established at village clusters.

6. Actuals may vary. Coordination includes local expenses such as rent, electricity, campaigning, local logistics, supervision, etc.

