

Badnawar Block, Dhar, Madhya Pradesh

Students Benefited 4,035

Saturation¹ 16.64%

Funded by Ministry of New and Renewable Energy
Madhya Pradesh Government

Institutional Partner Centre for Advanced Research & Development (CARD)

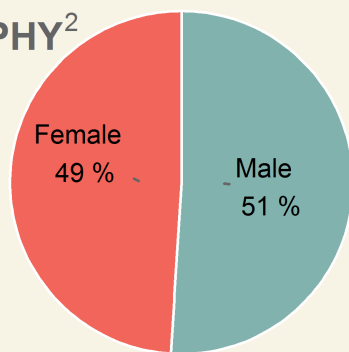
Kits supplied by Thrive Solar Energy Pvt. Ltd.;Hyderabad

Lamps assembled at Jhanta Market, Ward No.1, Petlawad, District Jhabua, M.P.

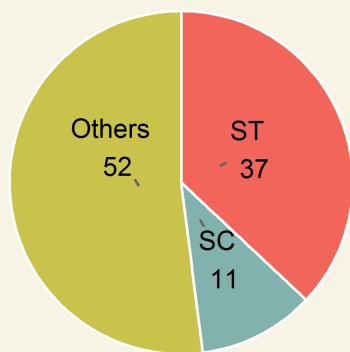


Area	Population	Rural Population	Villages	Schools
1084.51 sq.km	2,26,440	90.76%	165	520

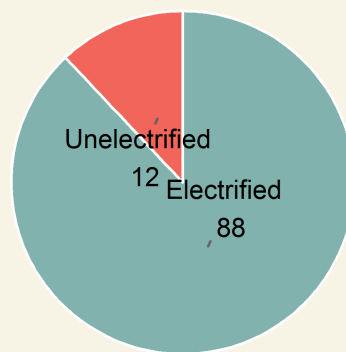
DEMOGRAPHY²



Gender

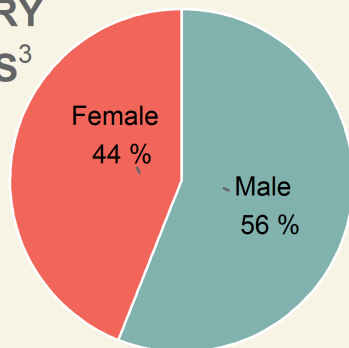


Category

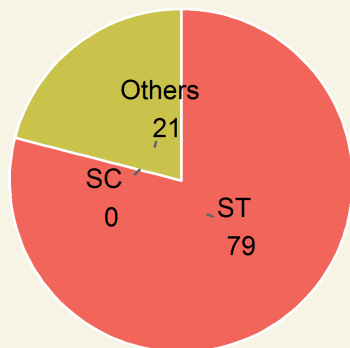


Household Electrification

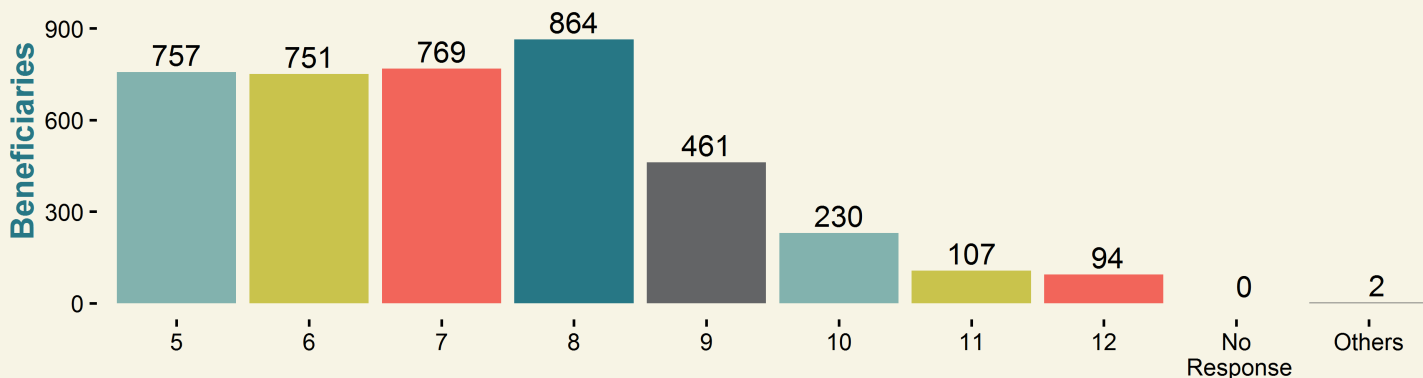
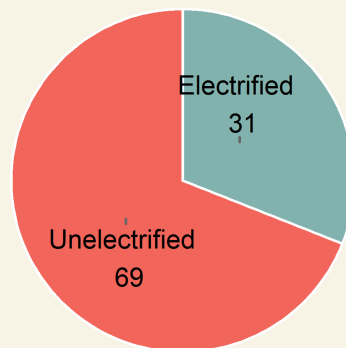
BENEFICIARY STATISTICS³



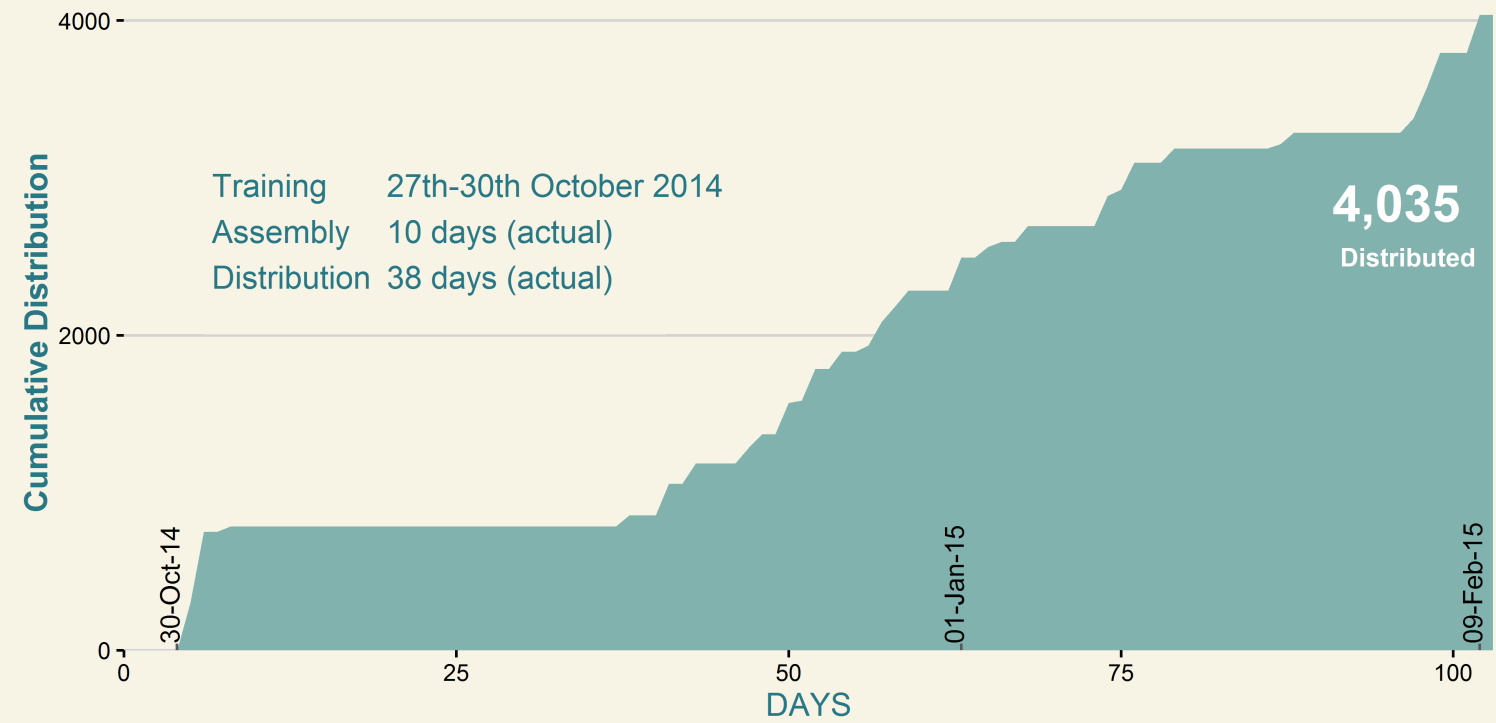
Beneficiaries



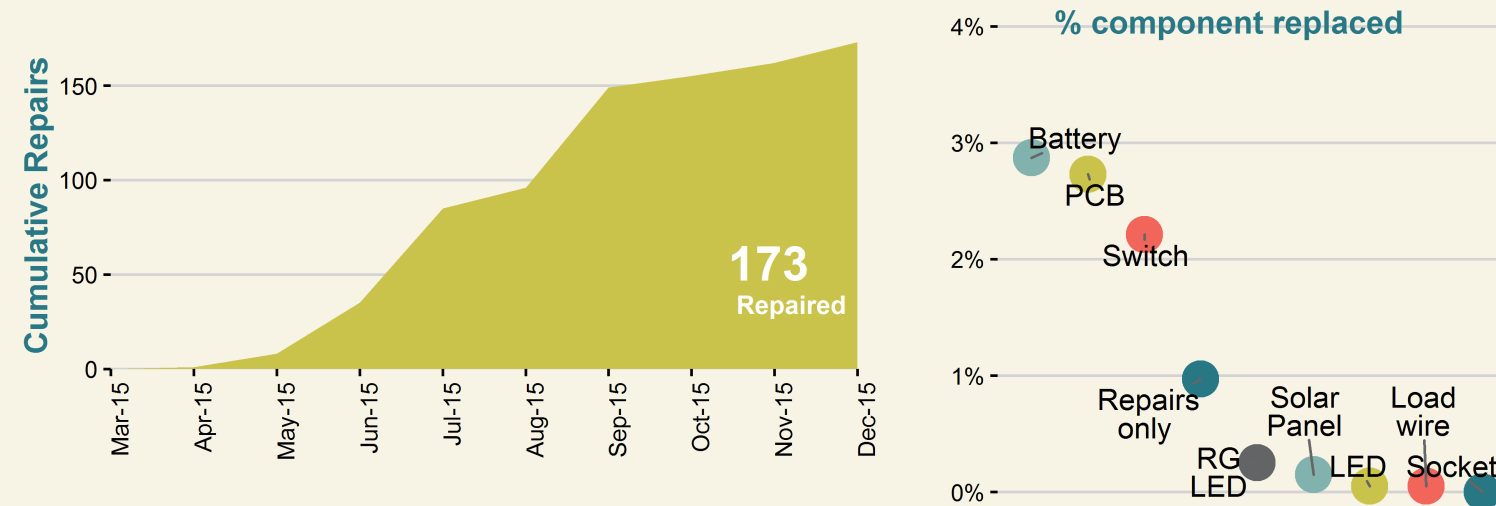
CLASS



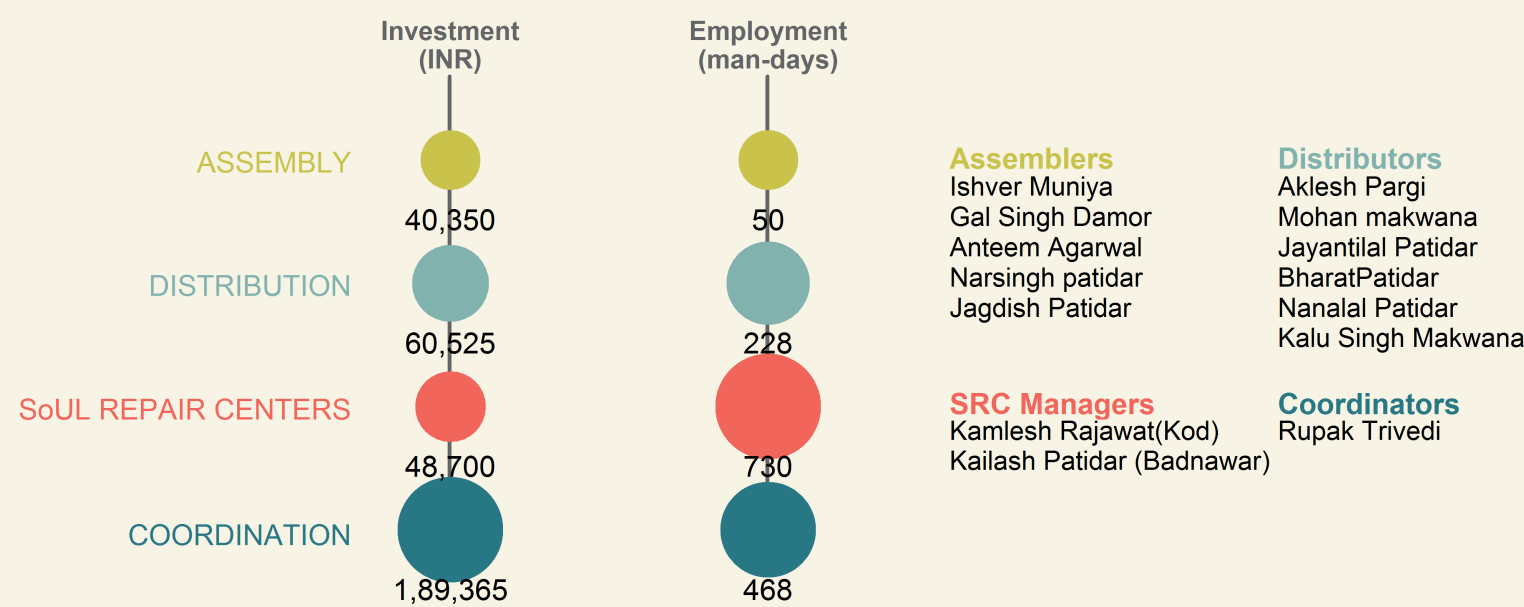
LAMP ASSEMBLY & DISTRIBUTION⁴



LAMP REPAIR & MAINTENANCE⁵



CONTRIBUTION TO LOCAL ECONOMY⁶



1. Saturation is the percentage of the block's rural school enrolment (5th-12th) benefited. (Enrolment data source: NUEPA)

2. Demography and other block details are obtained from Census of India 2011.

3. Beneficiaries details (i.e., students who purchased SoUL) were collected at the time of distribution.

4. Lamp distributed to rural students via schools at INR 120/ lamp.

5. After-sales service was provided free-of-cost through SoUL Repair Centers (SRCs) established at village clusters.

6. Actuals may vary. Coordination includes local expenses such as rent, electricity, campaigning, local logistics, supervision, etc.

