

Athner Block, Betul, Madhya Pradesh

Students Benefited 11,355

Saturation¹ 81.67%

Funded by Ministry of New and Renewable Energy
Government of Madhya Pradesh

Institutional Partner BAIF Development Research Foundation

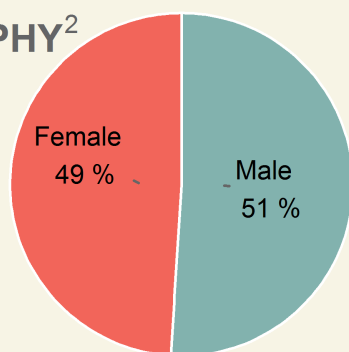
Kits supplied by Thrive Solar Energy Pvt. Ltd.; Hyderabad

Lamps assembled at Near Old Shankar Mandir, Pratap Ward, Tikari, District Betul

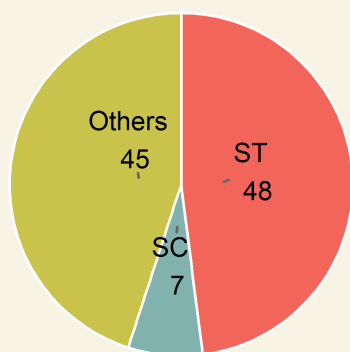


Area	Population	Rural Population	Villages	Schools
699.64 sq.km	1,06,793	88.84%	98	248

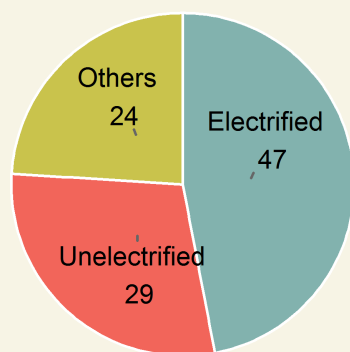
DEMOGRAPHY²



Gender

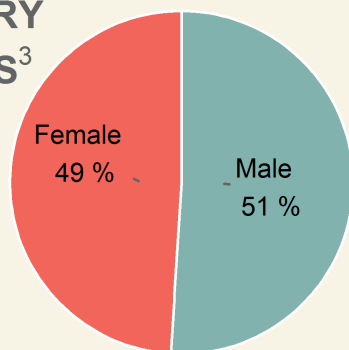


Category

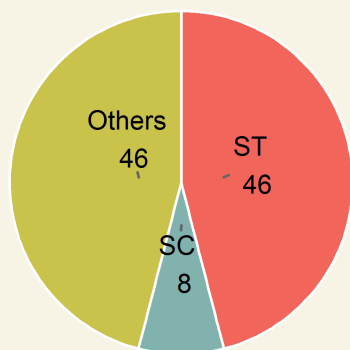


Household Electrification

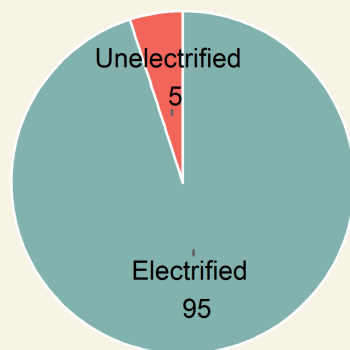
BENEFICIARY STATISTICS³



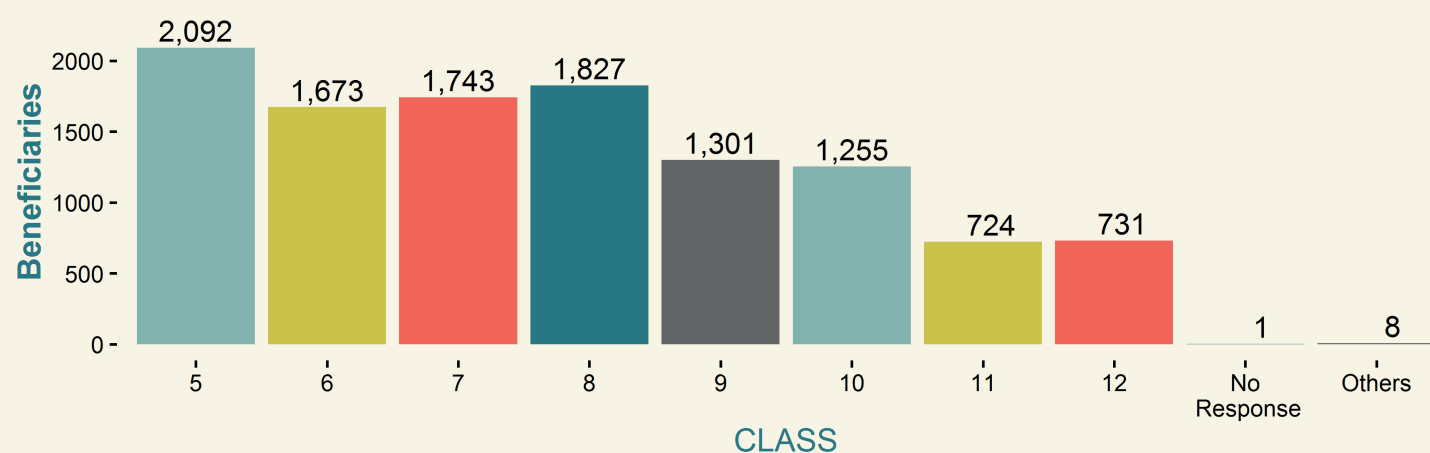
Gender



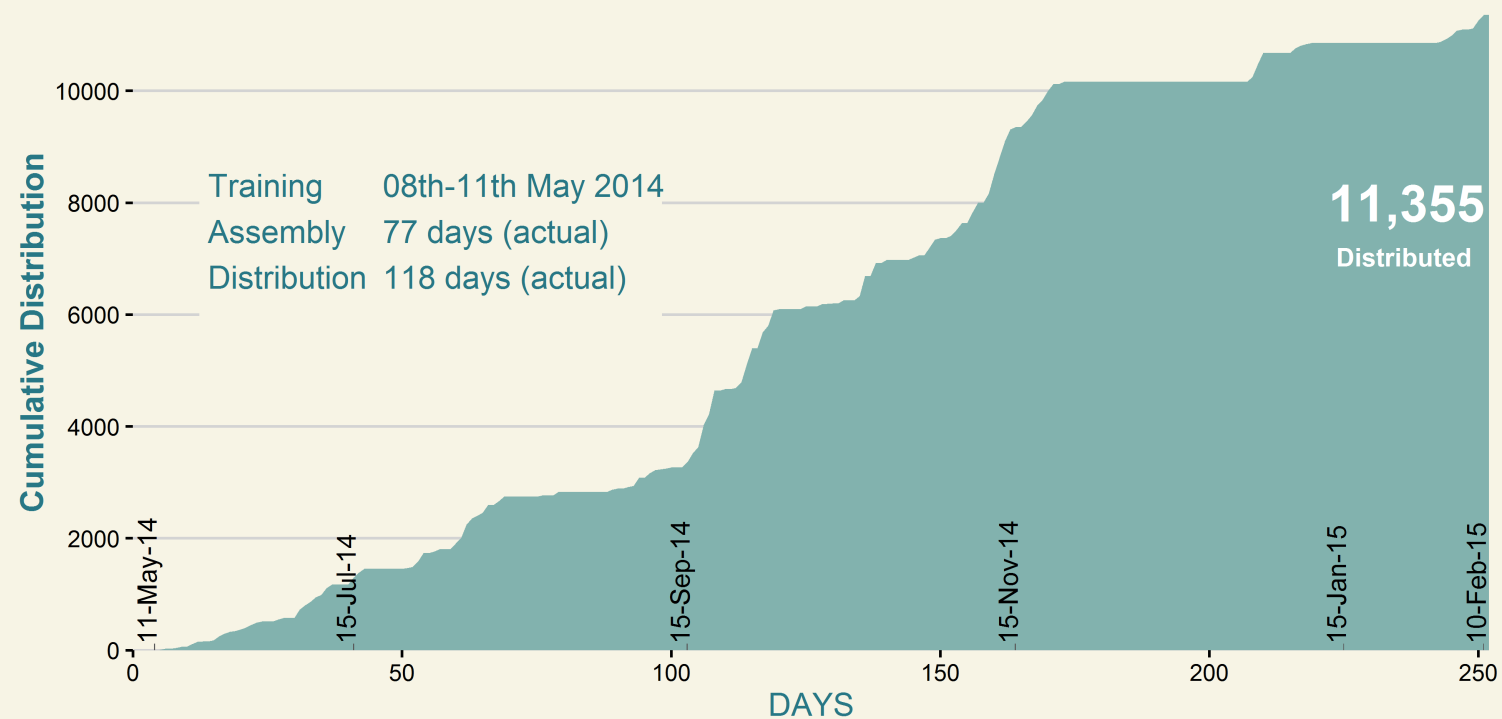
Category



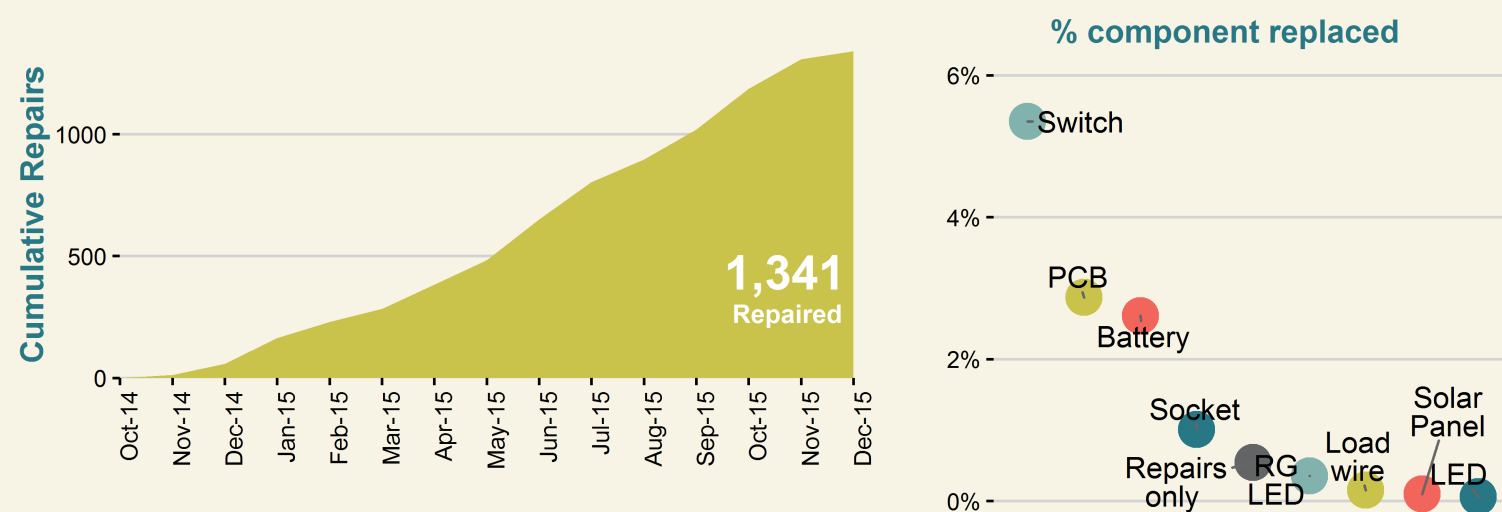
Household Electrification



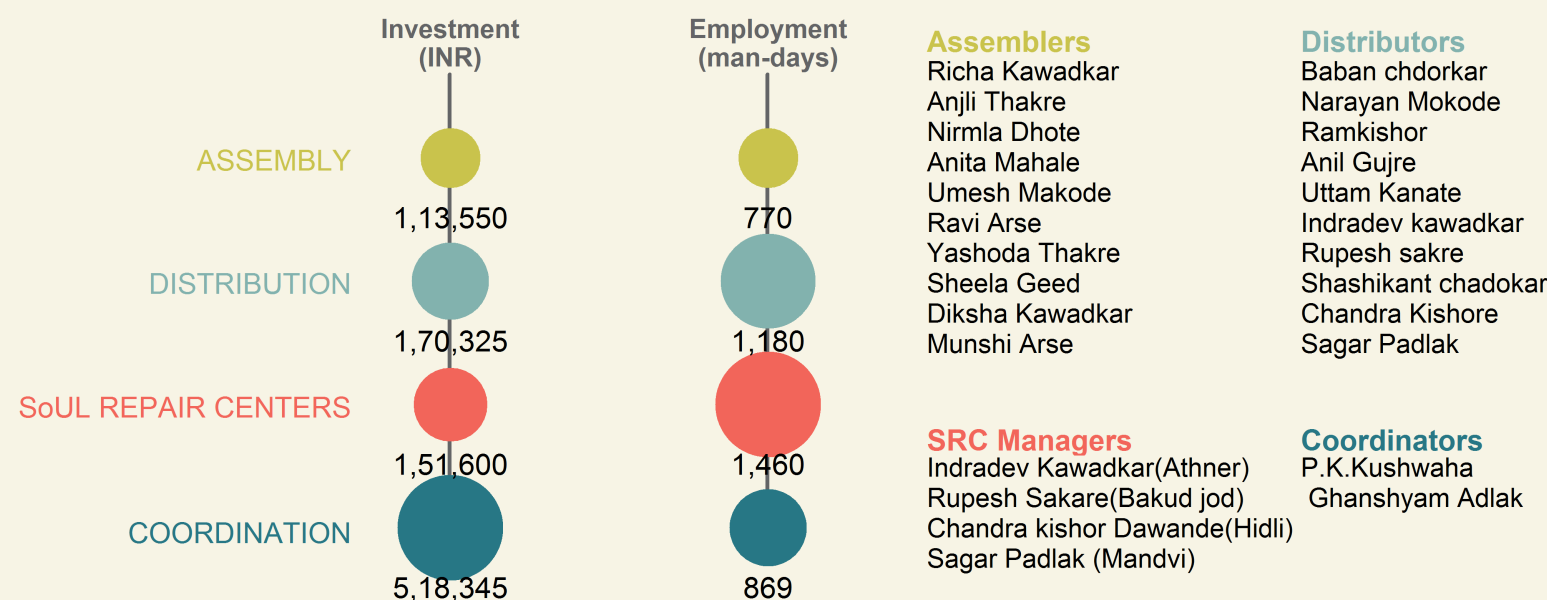
LAMP ASSEMBLY & DISTRIBUTION⁴



LAMP REPAIR & MAINTENANCE⁵



CONTRIBUTION TO LOCAL ECONOMY⁶



1. Saturation is the percentage of the block's rural school enrolment (5th-12th) benefited. (Enrolment data source: NUEPA)

2. Demography and other block details are obtained from Census of India 2011.

3. Beneficiaries details (i.e., students who purchased SoUL) were collected at the time of distribution.

4. Lamp distributed to rural students via schools at INR 120/ lamp.

5. After-sales service was provided free-of-cost through SoUL Repair Centers (SRCs) established at village clusters.

6. Actuals may vary. Coordination includes local expenses such as rent, electricity, campaigning, local logistics, supervision, etc.

