

# Wada Block, Palghar, Maharashtra

Students Benefited 12,393

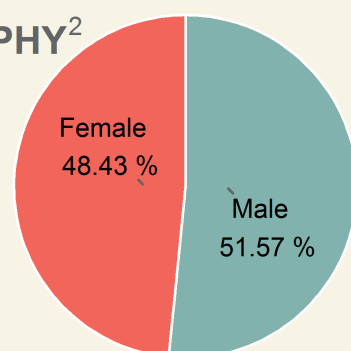
Saturation<sup>1</sup> 44.76%

Funded by Ministry of New and Renewable Energy  
Sir Dorabji Tata Trust  
Institutional Partner BAIF Development Research Foundation  
Kits supplied by Thrive Solar Energy Pvt. Ltd.; Hyderabad  
Lamps assembled at BAIF - MITTRA, Aamrai Campus, Jawhar, Thane, Maharashtra

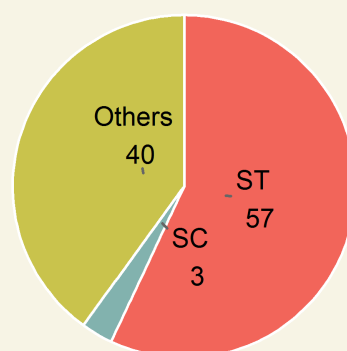


Area	Population	Rural Population	Villages	Schools
733.76 sq.km	1,78,370	86.57%	167	355

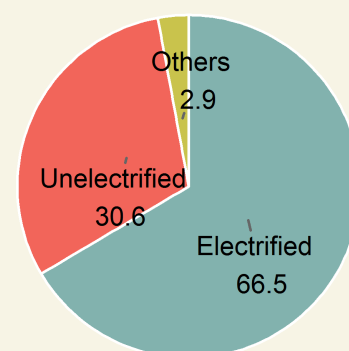
## DEMOGRAPHY<sup>2</sup>



Gender

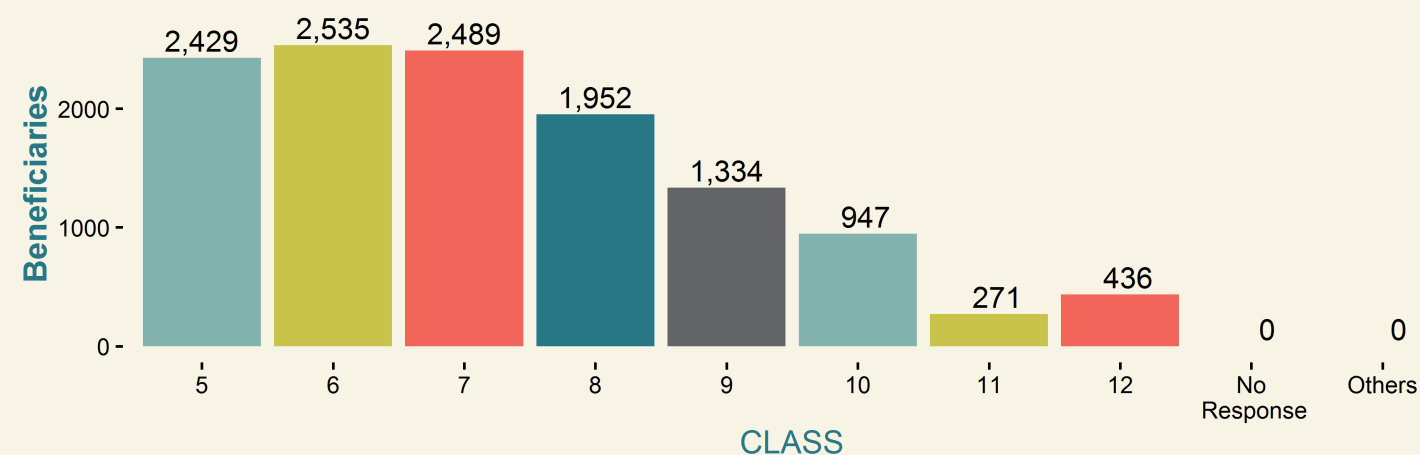
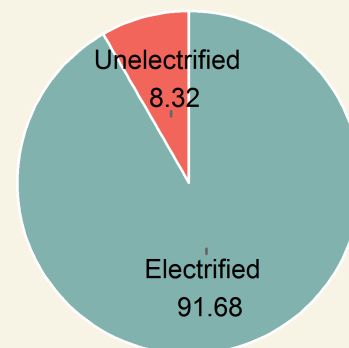
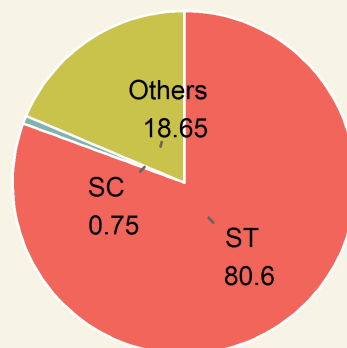
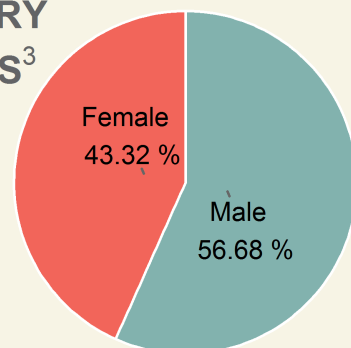


Category



Household Electrification

## BENEFICIARY STATISTICS<sup>3</sup>

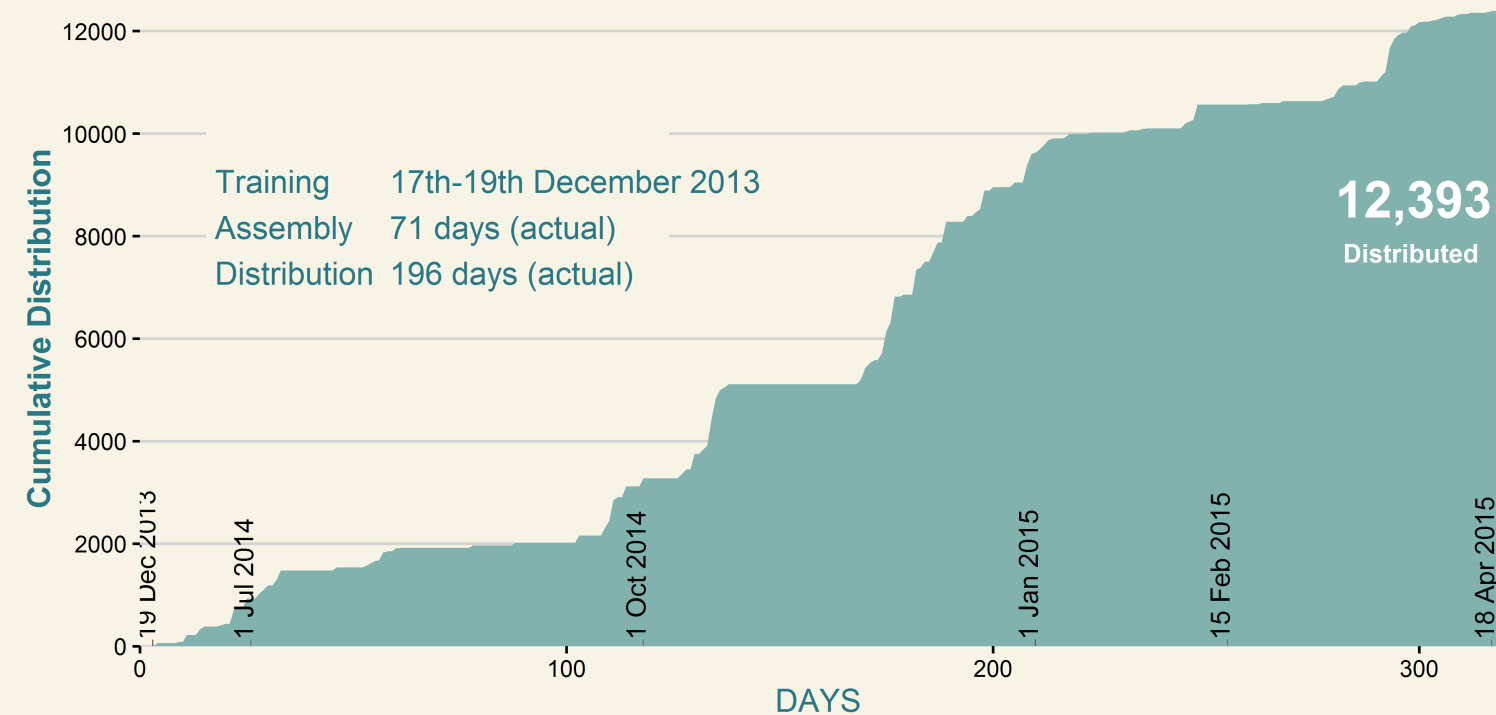


1. Saturation is the percentage of the block's rural school enrolment (5th-12th) benefited. (Enrolment data source: NUEPA)

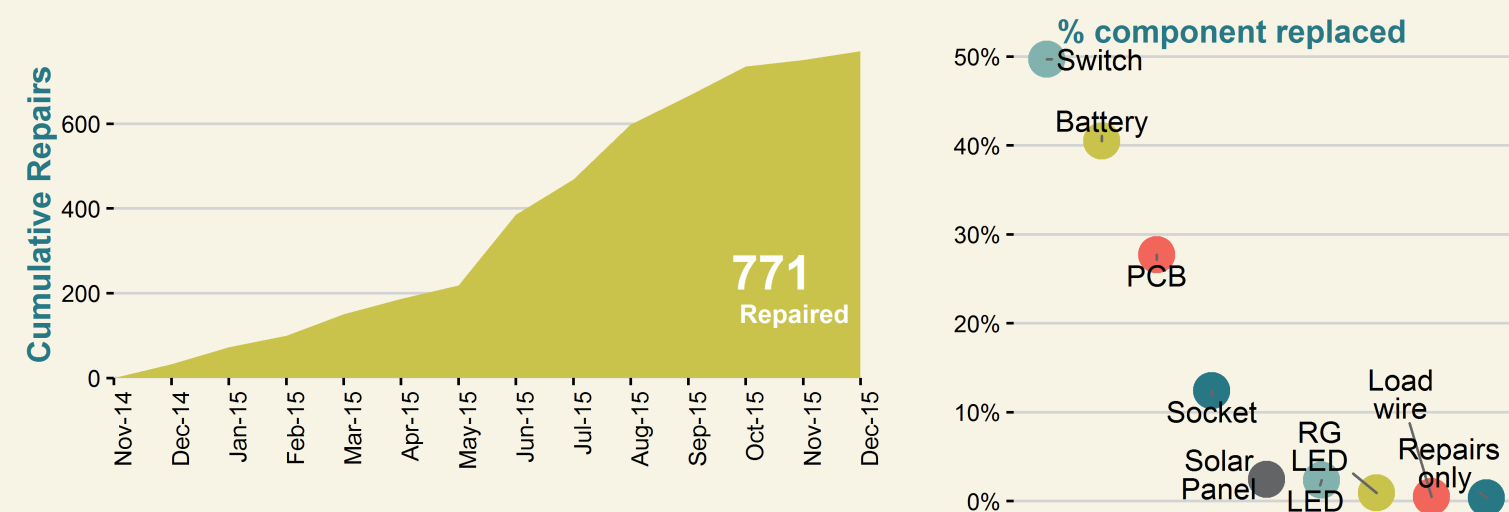
2. Demography and other block details are obtained from Census of India 2011.

3. Beneficiaries details (i.e., students who purchased SoUL) were collected at the time of distribution.

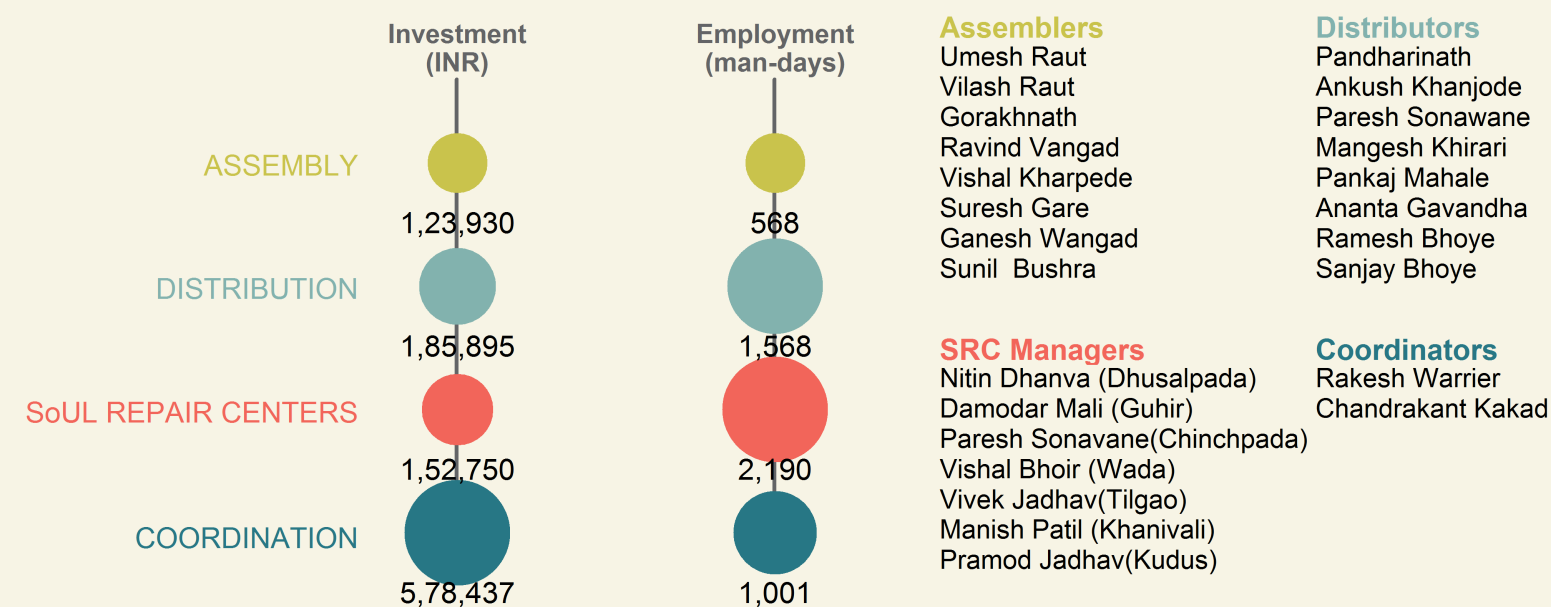
## LAMP ASSEMBLY & DISTRIBUTION<sup>4</sup>



## LAMP REPAIR & MAINTENANCE<sup>5</sup>



## CONTRIBUTION TO LOCAL ECONOMY<sup>6</sup>



4. Lamp distributed to rural students via schools at INR 120/ lamp.

5. After-sales service was provided free-of-cost through SoUL Repair Centers (SRCs) established at village clusters.

6. Actuals may vary. Coordination includes local expenses such as rent, electricity, campaigning, local logistics, supervision, etc.

